



LIVE OAK LIBRARY ANNEX PROJECT

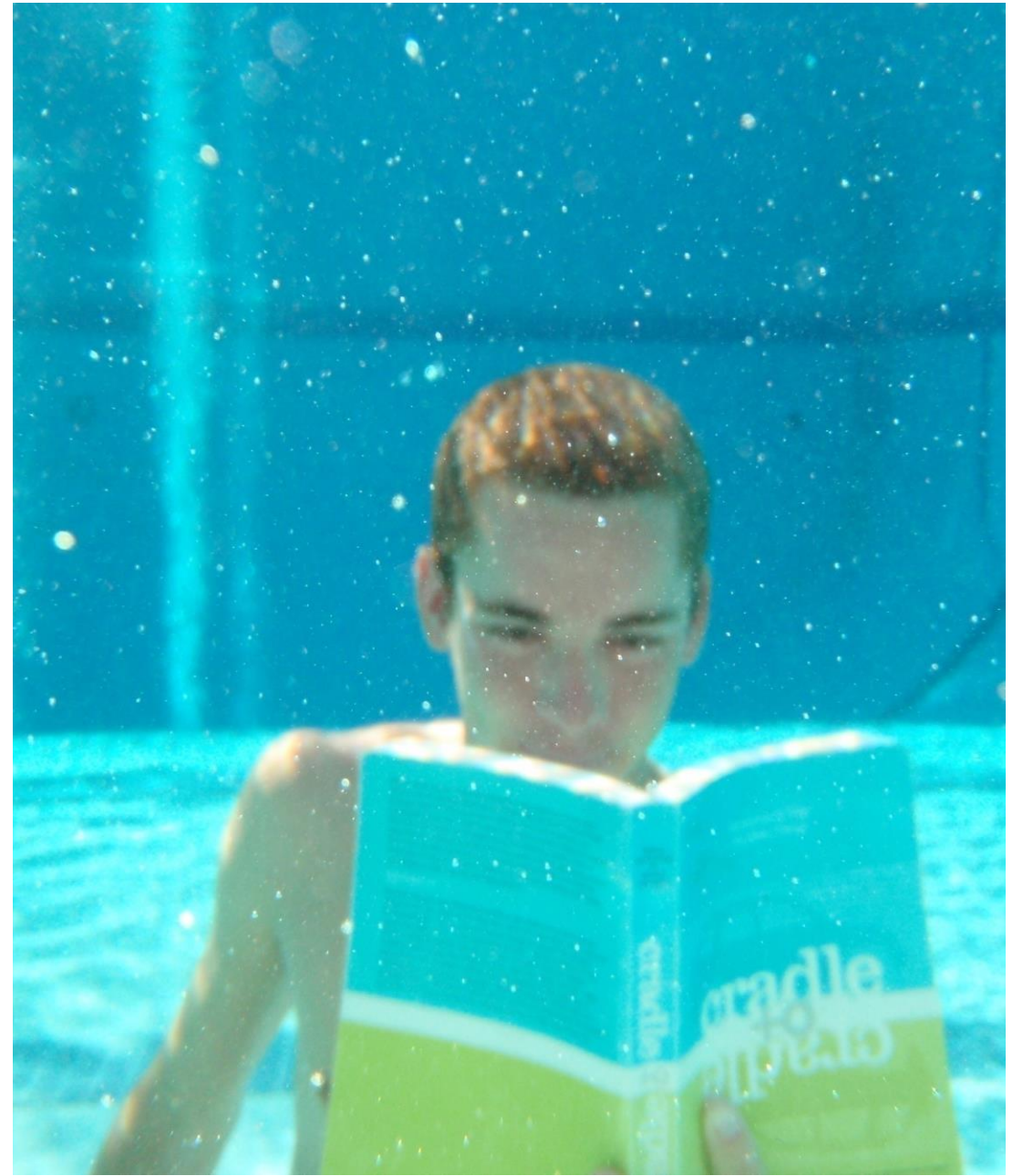
COUNTY OF SANTA CRUZ

December 4, 2018

COMMUNITY MEETING #3

"A person with a book goes to the **pool**. A library begins that way."

Chris Noll



COMMUNITY MEETING

3

- 1. Presenter Introductions**
- 2. Reporting from Community Meeting #2**
- 3. Preferred Concept and Discussion**
- 4. Live Oak Annex Project Goals**
- 5. Next Steps**

Presenter Introductions

Team Introductions



Santa Cruz County Parks

Jeff Gaffney

Director of Parks, County of Santa Cruz

Santa Cruz Public Works

Betsey Lynberg

Director of Capital Projects

Damon Adlao

Project Manager



SANTA CRUZ
PUBLIC LIBRARIES

Santa Cruz Public Libraries

Susan Nemitz

Director of Santa Cruz Public
Libraries

Heather Norquist

Regional Manager for Santa Cruz
Public Libraries

Janis O'Driscoll

Deputy Director
Santa Cruz Public Libraries

**NOLL
& TAM**
ARCHITECTS

Noll & Tam Architects

Scott Salge

Principal

Chris Noll

Principal

Suraj Reddy

Project Designer

Measure S

Planned library Improvements in Capitola and Live Oak – part of the 10-branch Santa Cruz Public Libraries system



Capitola



Live Oak



- | | |
|--|---|
|  Replace inadequate, cramped, temporary facilities with a modern, permanent library |  Create flexible program spaces for library and community activities |
|  Provide safe space for teens after school, including area for homework and tutoring |  Improve and upgrade teen area – a safe place for after-school uses including dedicated space for homework and tutoring |
|  Provide space for wide range of community programs serving seniors, children and community members of all ages |  Improve areas for young children's programs like story time, early childhood reading and computer access |
|  Community input on design process and features |  Partner with Live Oak School District, Boys and Girls Club and the County to establish a library annex at Shoreline Middle School |

Improving the Live Oak Branch

- Create flexible program spaces for library and community activities
- Improve and upgrade teen area – a safe place for after-school uses including dedicated space for homework and tutoring
- Improve areas for young children's programs like story time, early childhood reading and computer access
- Partner with Live Oak School District, Boys and Girls Club and the County to establish a library annex at Shoreline Middle School



Measure S | Live Oak Library | Annex Goals | Finding a Place

Programs offered at the Live Oak Branch:

Live Oak Library Book Group	ESL Conversation Group
Toddler Story Time	Live Oak Knitters
Preschool Story Time, Spanish Story Time (Cuentame un Cuento)	Do-It Yourself Crafts
Family Lagoon Watch	Tales to Tails
Code Combat	Homework Help



Limitations at existing Live Oak Branch:

- **Limited parking**
- **No separate programming space - sound travels throughout library and disturbs patrons.**
- **Teen room is often unavailable to teens, as it is used for all programs offered.**
- **No spaces suited to collaborative work.**

Measure S | Live Oak Library | Annex Goals | Finding a Place

Programs offered by Parks, Open Space & Cultural Services:

Art, Science, and Nature Day Camps	Kinder Enrichment Programs
Winter, Spring, and Summer Camps	Capitola Mall Walking Program
Zombie Camp (for teens)	Senior Strength and Training Class
Kreative Kids Programs	Senior and Adult Trips
After School Childhood Enrichment Programs	Community Classes

Limitations at existing Community Center:

- Great hall used for child care
- No smaller rooms available for trainings and classes
- No collaborative indoor spaces
- Limited indoor recreational opportunities
- Commercial kitchen under utilized



Measure S | Live Oak Library Annex Goals

Vision Statement: Provide multi-use learning spaces accessible to all

Santa Cruz Public Libraries – Live Oak Annex Project Goals

Create a **learning environment** which serves **all ages** and provides **gathering spaces** which encourage **intergenerational activities**

Provide **learning facilities** not available at the Existing Live Oak Library branch that are **free to the public**

Locate the facility in a **central location** accessible to the Live Oak Community

Design the facility to **function in partnership** with other community organizations maximizing the opportunities for **collaborative and engaging programming** as well as providing the **most efficient use of resources and personnel**

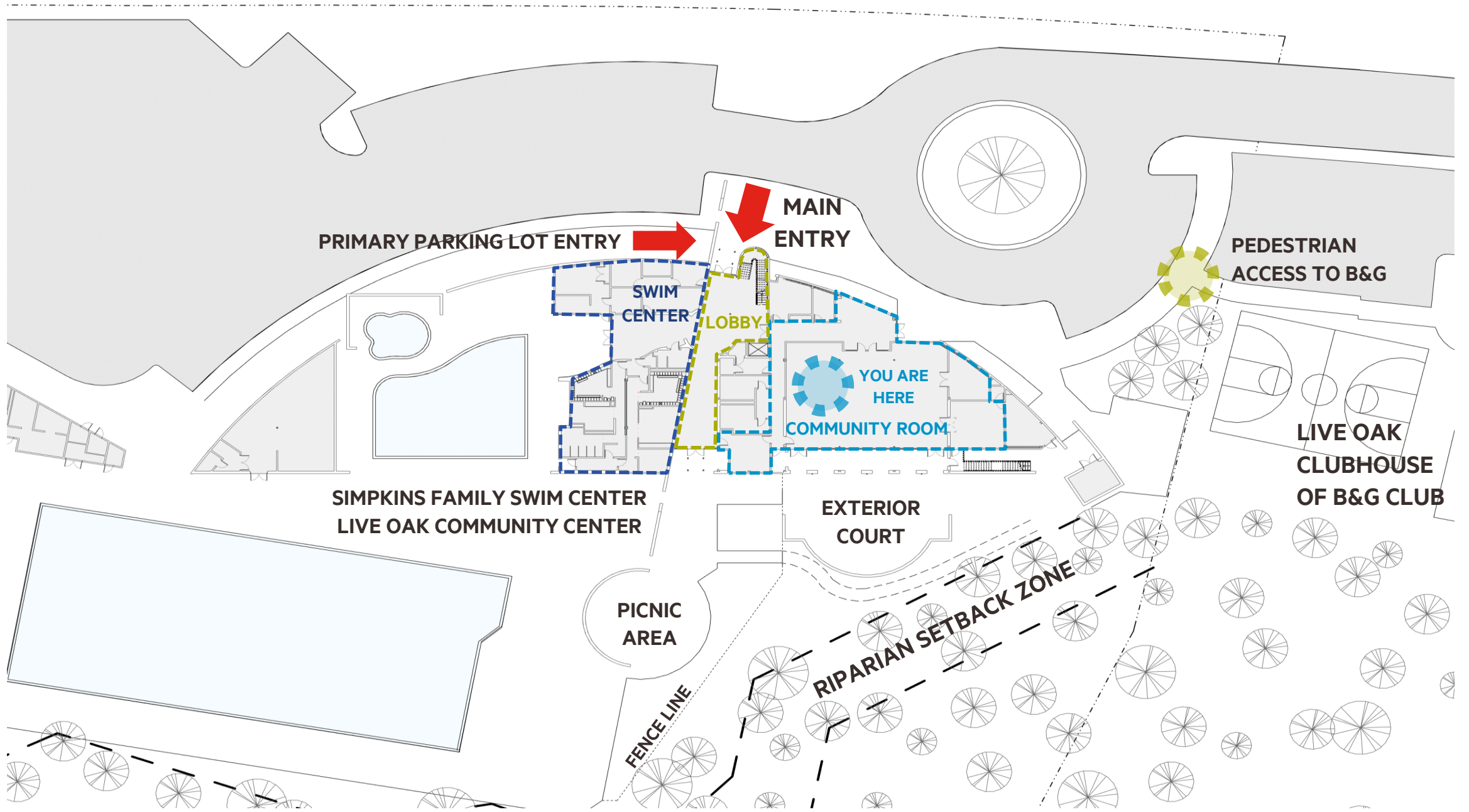
Leverage past investment in existing community institutions



Community Meeting #2 Report:

Meeting Comments / Voting

Programmatic Preferences

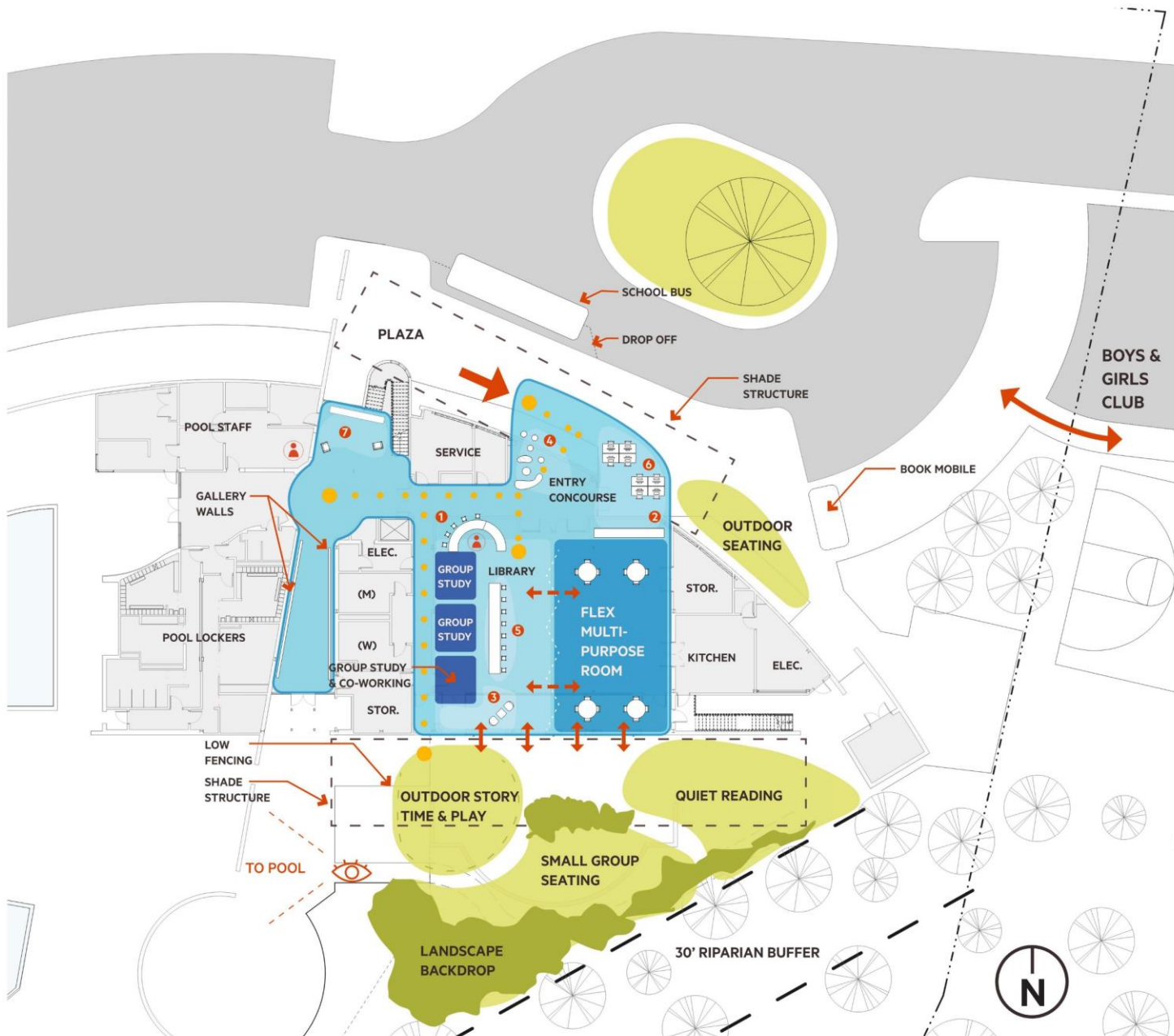


LIVE OAK LIBRARY ANNEX PROJECT SITE & EXISTING FACILITY

Live Oak Annex Background

Option A

EXISTING CENTER RENOVATED TO
LIBRARY AND FLEXIBLE PROGRAM
ROOM WITH NEW ENTRY



LIVE OAK LIBRARY ANNEX PROJECT COUNTY OF SANTA CRUZ



CONCEPT DESIGN OPTION A

- 1 RECEPTION
- 2 BOOK LOCKERS
- 3 KIDS' CORNER
- 4 INTERIOR COMFORTABLE SEATING
- 5 LAPTOP BAR
- 6 PUBLIC COMPUTERS
- 7 FRIENDS STORE

OPTION A

EXISTING CENTER RENOVATED TO LIBRARY AND FLEXIBLE PROGRAM ROOM WITH NEW ENTRANCE

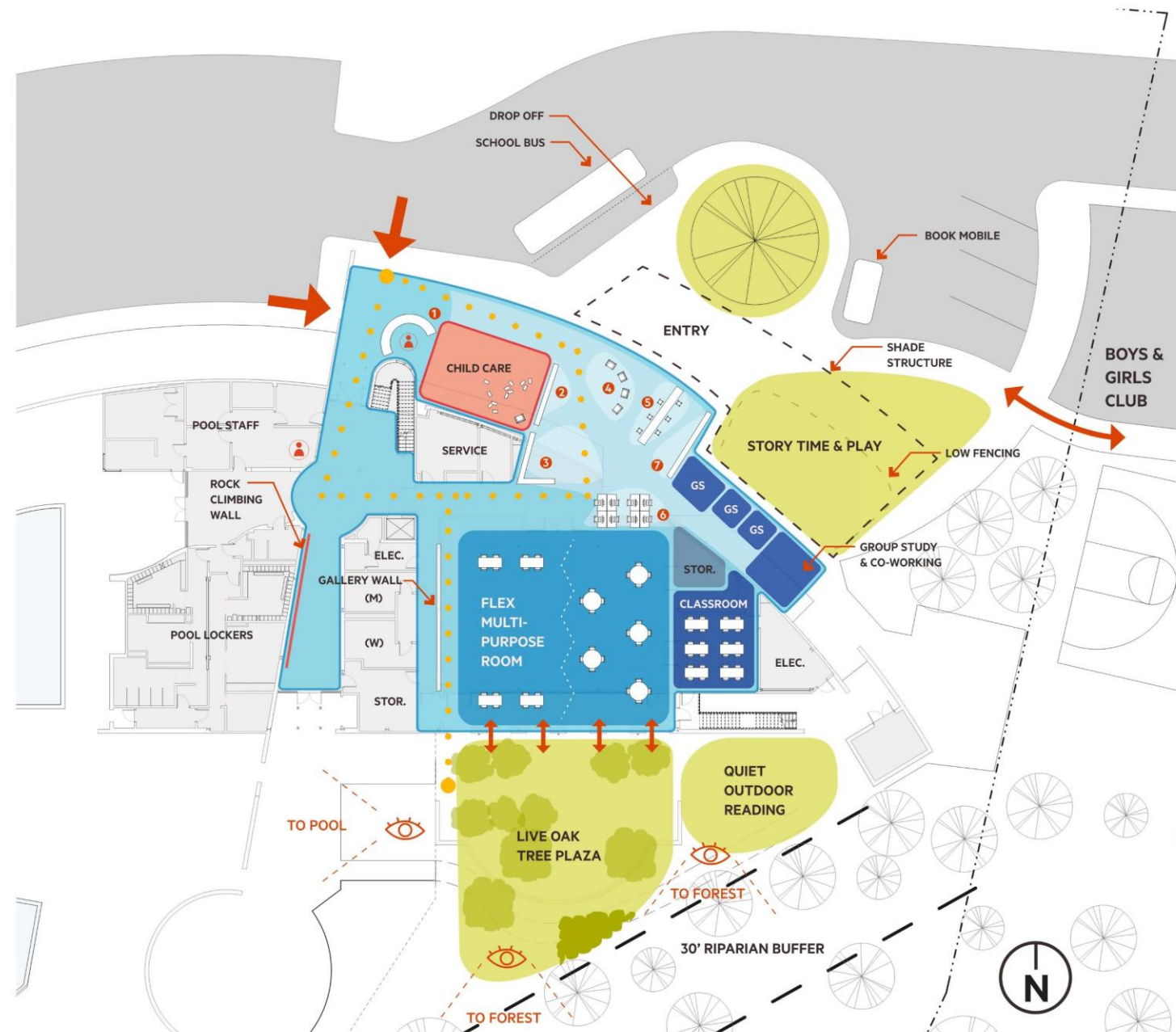
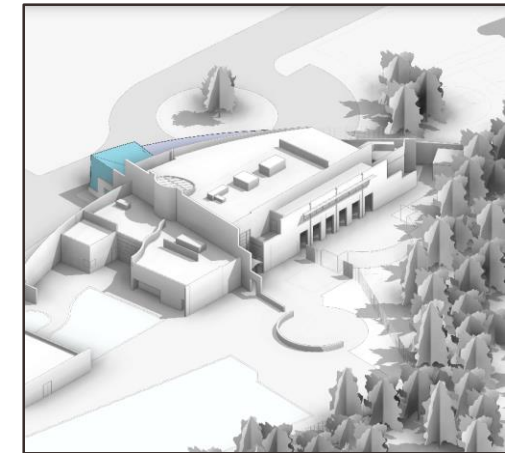
1

SUMMARY

- 1 - STRONG OVERALL PREFERENCE FOR "A"
- 2 - MAINTAIN KITCHEN & ADD TEACHING AREA
- 3 - LOCATE ENTRY FOR CLEAR WAY FINDING
- 4 - QUIET READING INTERIOR / EXTERIOR
- 5 - GROUP STUDY / CO-WORKING SPACES
- 6 - MAINTAIN PARKING AT ENTRY
- 7 - PROVIDE GALLERY SPACE
- 8 - MULTI-PURPOSE ROOMS
- 9 - SUPERVISION OF ENTRIES AND LIBRARY

Option B

LIBRARY ADDITION AT FRONT OF
BUILDING AND EXPANDED
ENTRANCE



LIVE OAK LIBRARY ANNEX PROJECT COUNTY OF SANTA CRUZ

CONCEPT DESIGN OPTION B

- 1 RECEPTION
- 2 BOOK LOCKERS
- 3 KIDS' CORNER
- 4 INTERIOR COMFORTABLE SEATING
- 5 LAPTOP BAR
- 6 PUBLIC COMPUTERS
- 7 FRIENDS STORE

OPTION B
 LIBRARY ADDITION AT FRONT OF BUILDING AND EXPANDED ENTRANCE
10

SUMMARY

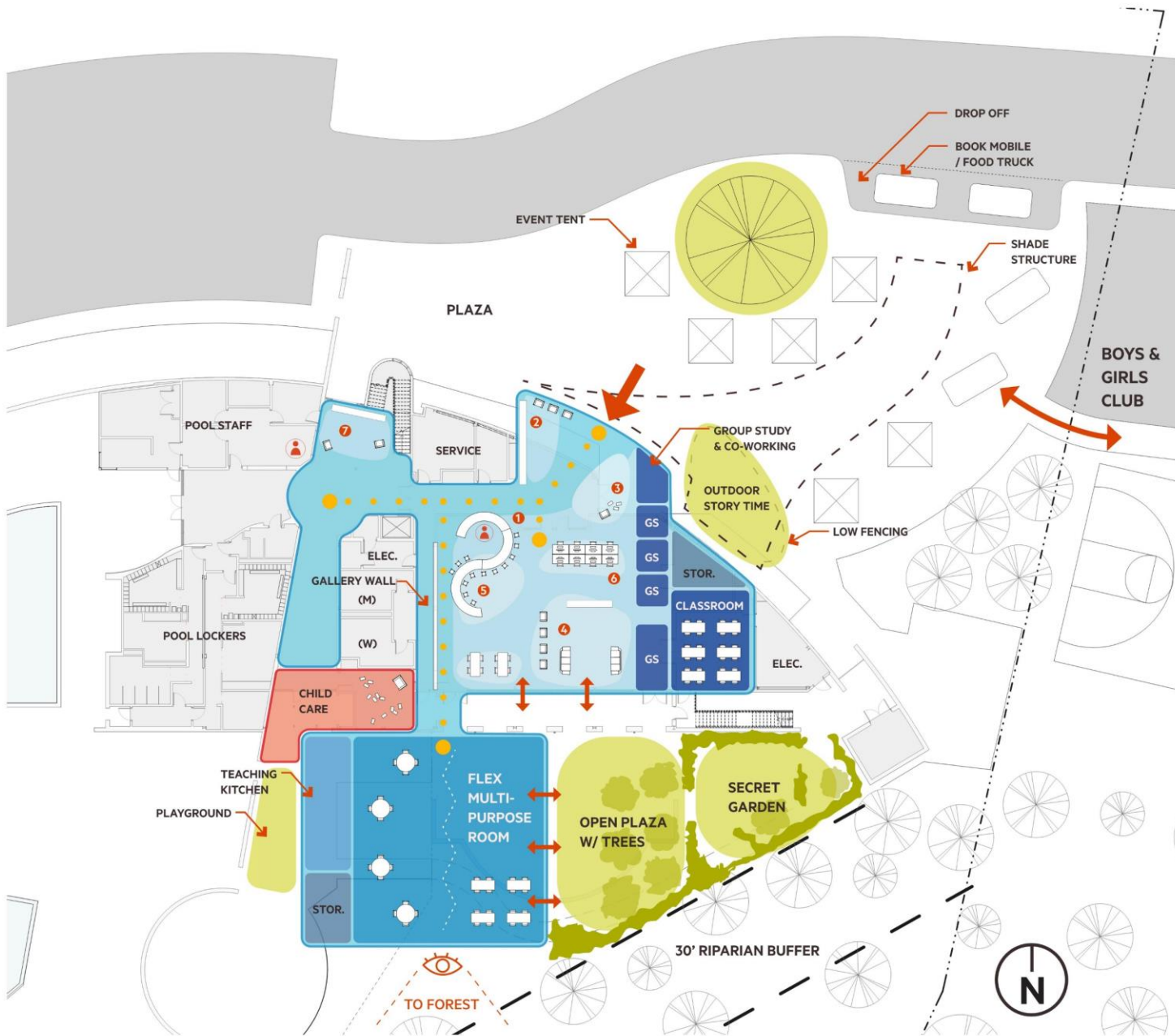
10 – OVERALL POOR PREFERENCE, NO KITCHEN IN FACILITY

11 – NO SUPERVISION OF LIBRARY AREA

12 – FLOOR SUITABLE FOR DANCE, YOGA, CRAFTS

13 – BOOK MOBILE & PLAZA ACCESS





LIVE OAK LIBRARY ANNEX PROJECT COUNTY OF SANTA CRUZ

Option C

RENOVATED CENTER FOR LIBRARY
AND EXPANDED FLEXIBLE
PROGRAM ROOM



CONCEPT DESIGN OPTION C

- 1 RECEPTION
- 2 BOOK LOCKERS
- 3 KIDS' CORNER
- 4 INTERIOR COMFORTABLE SEATING
- 5 LAPTOP BAR
- 6 PUBLIC COMPUTERS
- 7 FRIENDS STORE

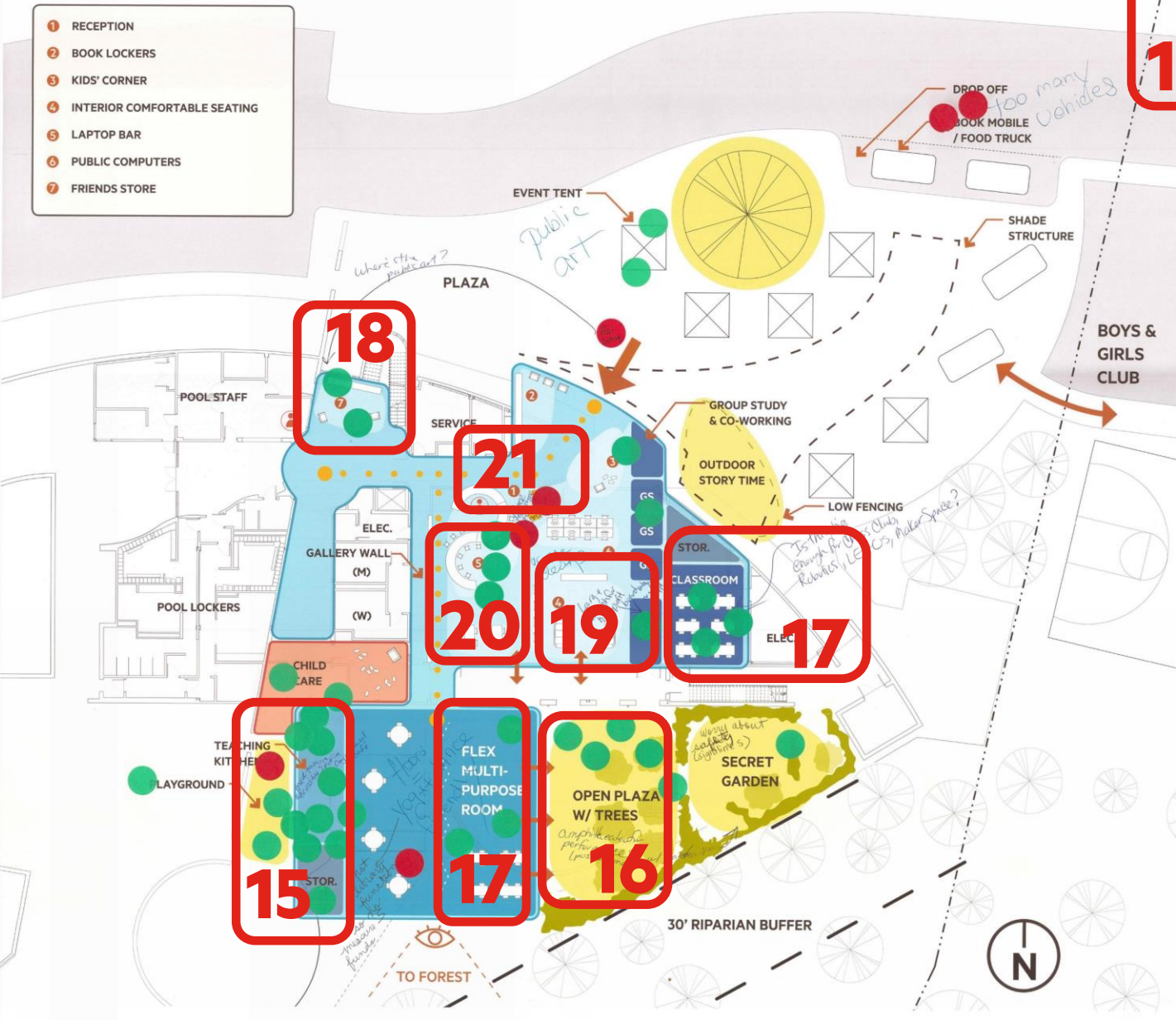
OPTION C

14

RENOVATED CENTER FOR LIBRARY AND
EXPANDED FLEXIBLE PROGRAM ROOM

SUMMARY

- 14 – OVERALL MIXED PREFERENCE FOR CONCEPT
- 15 – KITCHEN FACILITY & TEACHING AREA
- 16 – OPEN OUTDOOR SPACE FOR FUNCTIONS
- 17 – CLASSROOM SPACE FOR VARIOUS PROGRAMS
- 18 – ENTRY PREFERENCE AT EXISTING LOCATION
- 19 – CONFERENCE ROOM SPACE FOR 20 PEOPLE
- 20 – LAPTOP BAR “GENIUS BAR”
- 21 – LACK OF STAFF/SUPERVISION AT LIBRARY



LANDSCAPE CHARACTER:

SUMMARY

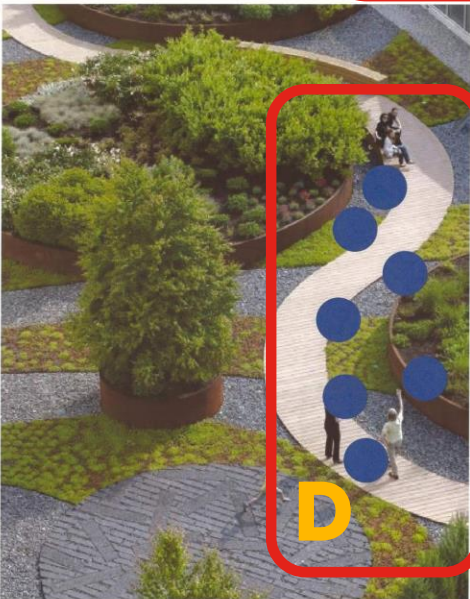
A – AMPHITHEATER

SEATING

B – GROUP SEATING

C – QUIET SEATING

D – SOFT PATHS



EBB & FLOW
LIVE OAK LIBRARY ANNEX
OCTOBER 22, 2018

JONI L. JANECKI
& ASSOCIATES

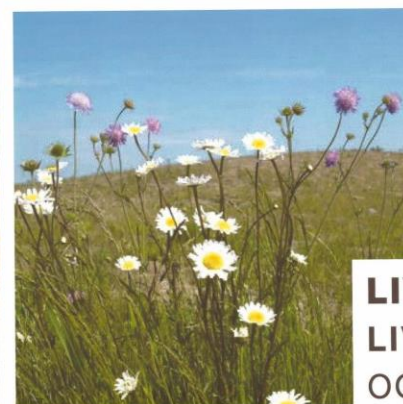
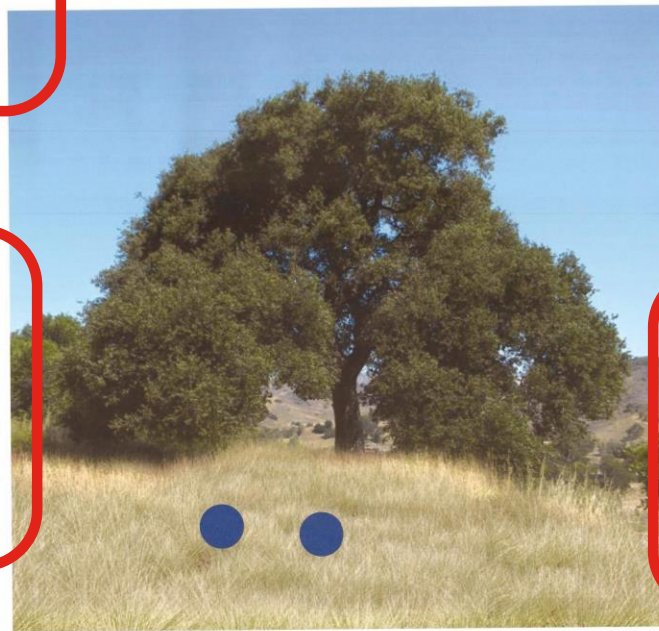
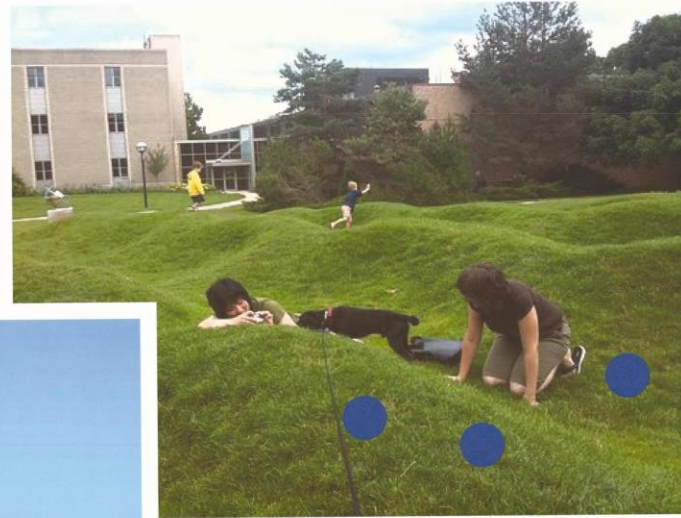
LANDSCAPE CHARACTER:

SUMMARY

E – CHILDREN’S GARDEN

F – CAFÉ TABLE SEATING

G – LANDSCAPE SEATING



LIVE OAK SAVANNA
LIVE OAK LIBRARY ANNEX
OCTOBER 22, 2018

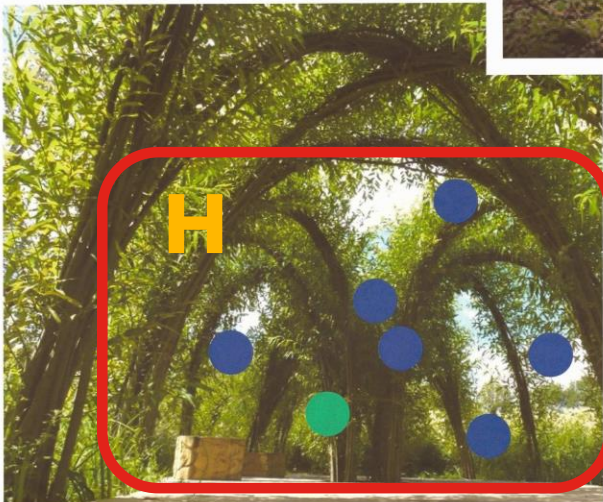
JONI L. JANECKI
& ASSOCIATES

LANDSCAPE CHARACTER:

SUMMARY

H – SHADE COVER

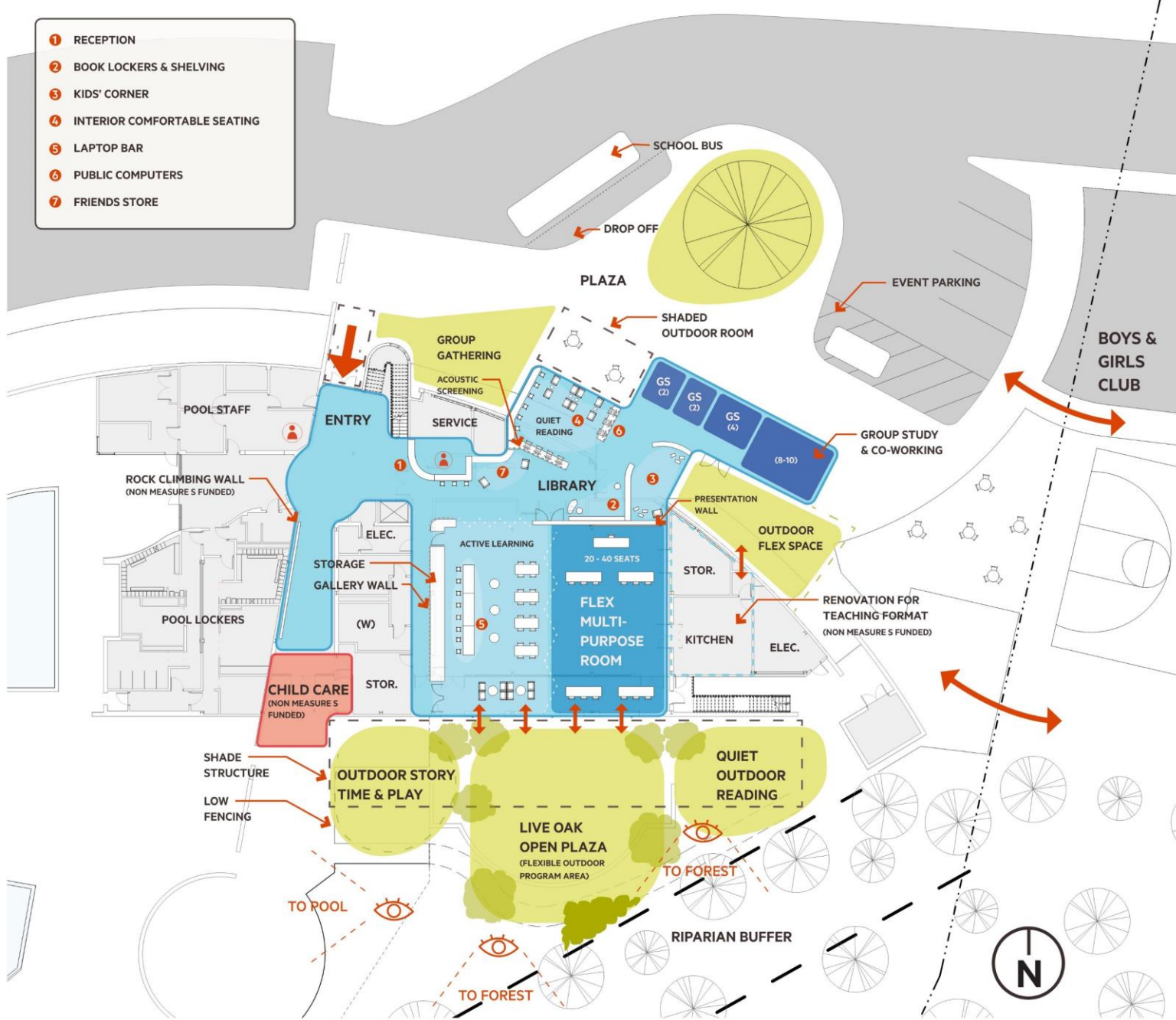
I – BENCH SEATING



SECRET GARDEN
LIVE OAK LIBRARY ANNEX
OCTOBER 22, 2018

JONI L. JANECKI
& ASSOCIATES

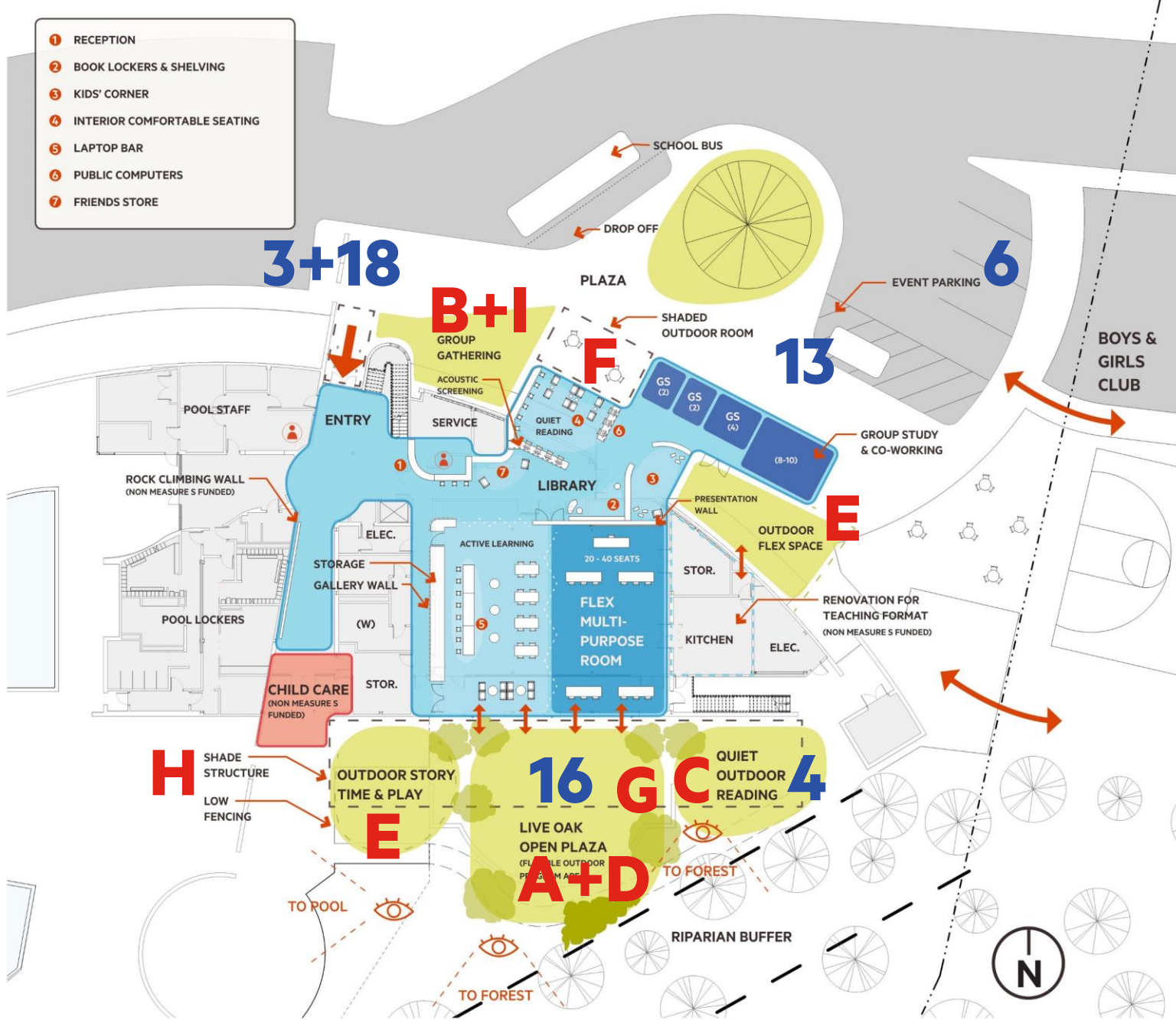
Proposed Annex Concept Design



PROPOSED CONCEPT DESIGN



- 1 RECEPTION
- 2 BOOK LOCKERS & SHELVING
- 3 KIDS' CORNER
- 4 INTERIOR COMFORTABLE SEATING
- 5 LAPTOP BAR
- 6 PUBLIC COMPUTERS
- 7 FRIENDS STORE

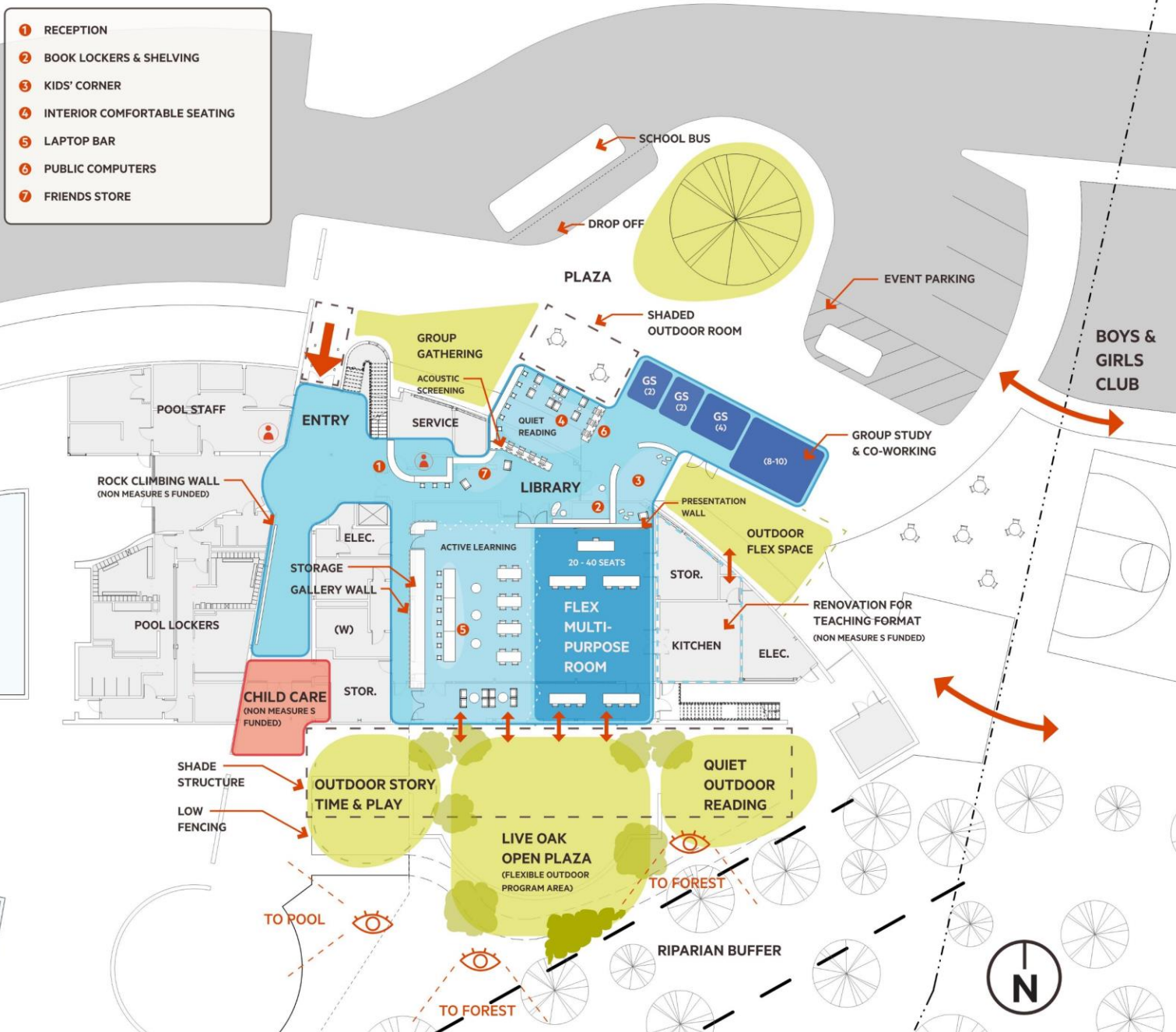


PROPOSED CONCEPT DESIGN - EXTERIOR

- 3 – LOCATE ENTRY FOR CLEAR WAY FINDING
- 4 – QUIET READING INTERIOR / EXTERIOR
- 6 – MAINTAIN PARKING AT ENTRY
- 13 – EVENT PARKING & PLAZA ACCESS
- 16 – OPEN OUTDOOR SPACE FOR FUNCTIONS
- 18 – ENTRY PREFERENCE AT EXISTING LOCATION

- A – AMPHITHEATER SEATING
- B – GROUP SEATING
- C – QUIET SEATING
- D – SOFT PATHS
- E – CHILDREN'S GARDEN
- F – CAFÉ TABLE SEATING
- G – LANDSCAPE SEATING
- H – SHADE COVER
- I – BENCH SEATING





PROPOSED CONCEPT DESIGN – EXTERIOR

FLEXIBLE OUTDOOR PROGRAM AREA

- STORY TIME
- YOGA CLASS
- ENRICHMENT PROGRAMS
- SENIOR STRETCH CLASS
- CULTURAL FAIRS

- 1 RECEPTION
- 2 BOOK LOCKERS & SHELVING
- 3 KIDS' CORNER
- 4 INTERIOR COMFORTABLE SEATING
- 5 LAPTOP BAR
- 6 PUBLIC COMPUTERS
- 7 FRIENDS STORE



PROPOSED CONCEPT DESIGN – INTERIOR

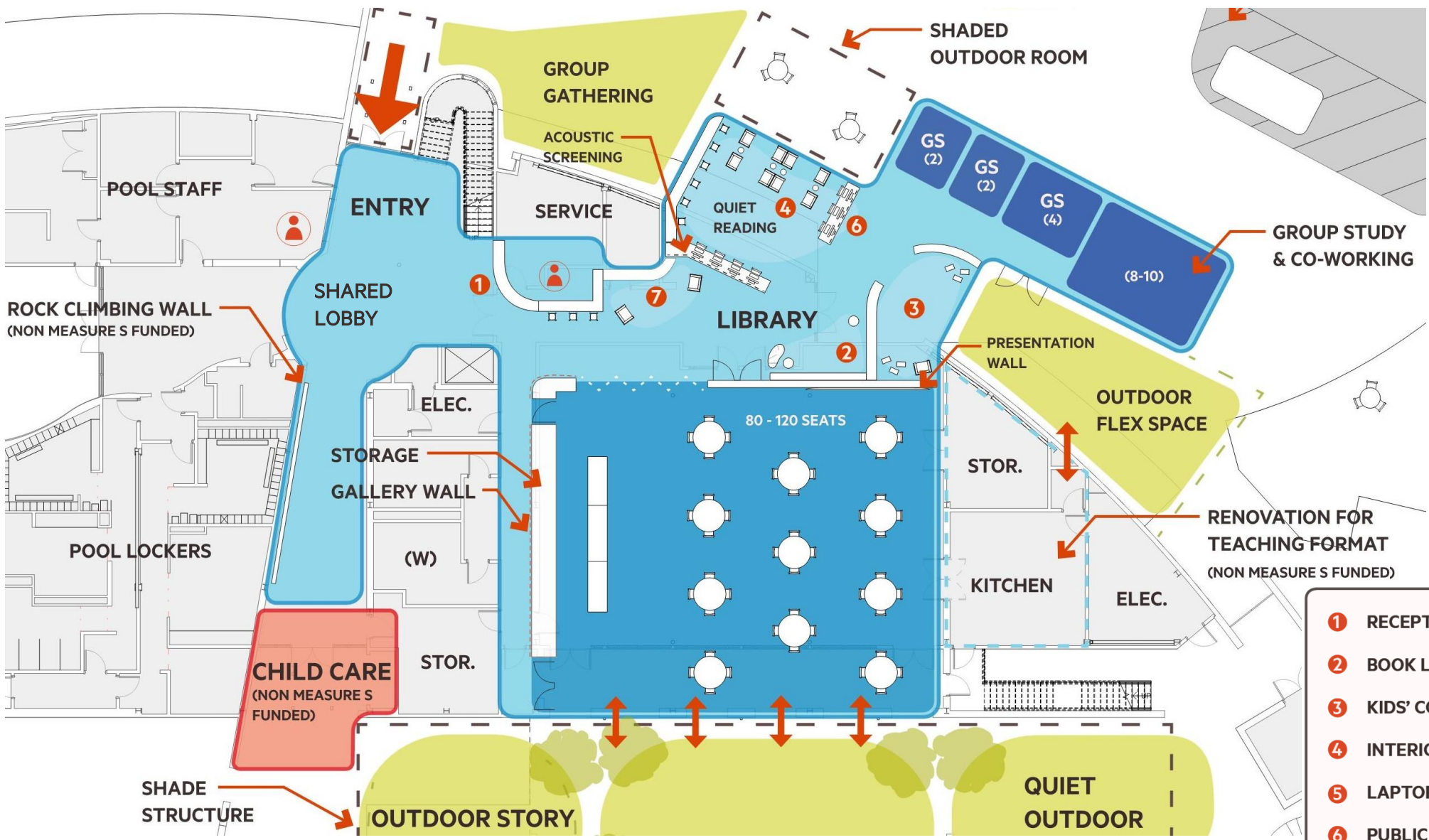
FLEX MULTI-PURPOSE ROOM

- CLASSROOM
- SMALL MEETING
- FITNESS CLASS
- SMALL EVENT
- TRAINING
- DANCE CLASS
- COOKING CLASS

ACTIVE LEARNING SPACE

- WRITING GROUP
- MAKER SPACE
- CRAFT PROGRAMS
- SEWING CLASSES
- OPEN SEMINARS

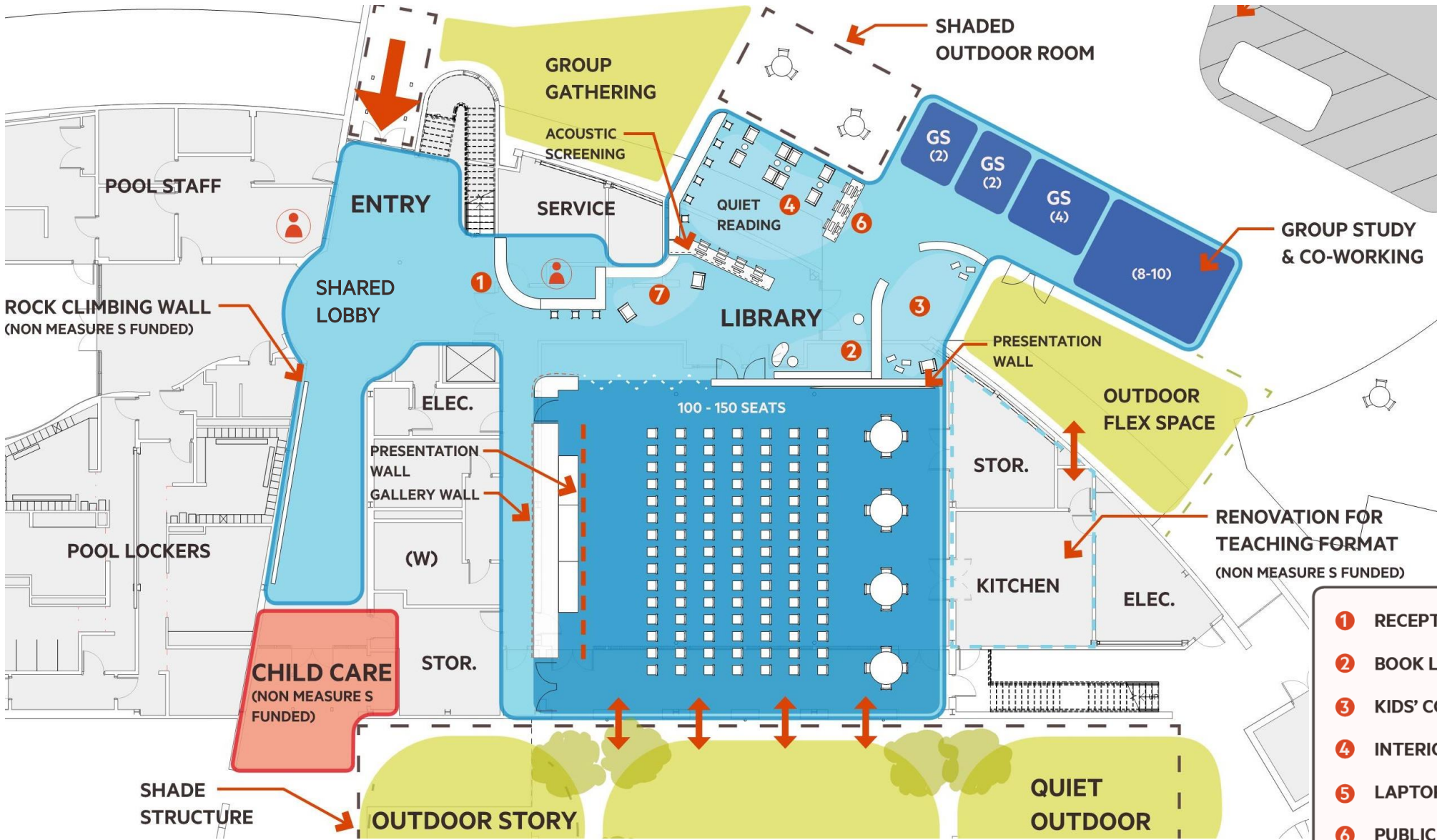
- ① RECEPTION
- ② BOOK LOCKERS & SHELVING
- ③ KIDS' CORNER
- ④ INTERIOR COMFORTABLE SEATING
- ⑤ LAPTOP BAR
- ⑥ PUBLIC COMPUTERS
- ⑦ FRIENDS STORE



**PROPOSED
CONCEPT DESIGN:**

- **COMMUNITY EVENT**
- **BANQUET**
- **VOTING PRECINCT**
- **ART SHOW**

- 1 RECEPTION
- 2 BOOK LOCKERS & SHELVING
- 3 KIDS' CORNER
- 4 INTERIOR COMFORTABLE SEATING
- 5 LAPTOP BAR
- 6 PUBLIC COMPUTERS
- 7 FRIENDS STORE



**PROPOSED
CONCEPT DESIGN:**

- CONFERENCE
- LARGE GROUP TRAINING
- PERFORMANCE
- MOVIE NIGHT

- 1 RECEPTION
- 2 BOOK LOCKERS & SHELVING
- 3 KIDS' CORNER
- 4 INTERIOR COMFORTABLE SEATING
- 5 LAPTOP BAR
- 6 PUBLIC COMPUTERS
- 7 FRIENDS STORE

Measure S | Live Oak Library Annex Goals

Vision Statement: Provide multi-use learning spaces accessible to all

Santa Cruz Public Libraries – Live Oak Annex Project Goals

Create a **learning environment** which serves **all ages** and provides **gathering spaces** which encourage **intergenerational activities**

Provide **learning facilities** not available at the Existing Live Oak Library branch that are **free to the public**

Locate the facility in a **central location** accessible to the Live Oak Community

Design the facility to **function in partnership** with other community organizations maximizing the opportunities for **collaborative and engaging programming** as well as providing the **most efficient use of resources and personnel**

Leverage past investment in existing community institutions



PLANNING FOR A PARTNERSHIP

SANTA CRUZ PUBLIC LIBRARIES & SANTA CRUZ PARKS AND OPEN SPACE

MASTER SCHEDULE: LIBRARY PROGRAMS & SIMPKINS CENTER PROGRAMS

EVENT SCHEDULE: YEARLY COMMUNITY EVENTS & SCHOOL CALENDAR

PARKING DEMAND: COORDINATED SCHEDULE FOR JOINT USE,
INCLUDING SEASONAL DEMAND

FACILITY SUPPORT: BUILDING MAINTENANCE, SERVICES & UTILITIES

STAFFING: SCHEDULE & PROGRAMMING SUPPORT

POLICIES & RULES: LIBRARY PATRON USE & SIMPKINS CENTER USE

PLANNING A PROJECT - NEXT STEPS

SANTA CRUZ COUNTY

PROJECT SCOPE PROPOSAL: RENOVATION & NEW CONSTRUCTION

ESTIMATED PROJECT COST: CONSTRUCTION & PROJECT DESIGN

IMPLEMENTATION PLAN: LIBRARY PARKS MOU, COST SHARE
PROJECT SCHEDULE & PHASING PLAN

SPRING 2019: PROJECT RECOMMENDATION TO GO BEFORE
SANTA CRUZ COUNTY BOARD OF SUPERVISORS

Community Meeting #3: Discussion

Discussion & Questions:

- **COMMENT CARDS**
- **ONLINE RESOURCES**

To review this presentation or for access to previous presentations:

www.scparks.com

Check out links:

Santa Cruz Public Libraries:

<https://www.santacruzpl.org/>

Parks, Open Space & Cultural Services for the County of Santa Cruz:

<http://www.scparks.com/>