

SANTA CRUZ COUNTY
INTEGRATED WASTE MANAGEMENT LOCAL TASK FORCE
Thursday, March 5, 2026, 3:00 – 4:45 pm
Scotts Valley City Hall – Council Chambers
1 Civic Center Drive, Scotts Valley CA 95066



Meeting Minutes

- 1) **Welcome and Quorum Verification** - Quorum was present in the room prior to the meeting start time. Both the chair and vice chair were absent and Sandy Brown, Santa Cruz County alternate, called the meeting to order at 3:00pm. Staff called roll and meeting attendance was noted as follows:

Voting Members/Alternates Present: Sandy Brown (County alternate/volunteer chair) Jacob Guth (County, citizen rep), Erika Senyk (Capitola), Leslie O'Malley (Santa Cruz, alternate), Greg Wimp (Scotts Valley), Antonio Banderas (Watsonville, alternate), Tami Stolzenhaler (Watsonville, alternate).

Members/Alternates Present but Not Voting: Claudia Villalta-Mejia (County, citizen rep alternate – not voting because member present)

Members/Alternates Absent: Justin Cummings (County), Felipe Hernandez (County, chair), Ramon Gomez (County, alternate), Susan Westman (Capitola, alternate), Bob Nelson (Santa Cruz), Scott Newsome (Santa Cruz), Rene Golder (Santa Cruz, alternate), Rodolfo Onchi (Scotts Valley, alternate), Ari Parker (Watsonville, vice chair), Will Smith (Watsonville).

Task Force Staff Present: Beau Hawksford (County), Kasey Kolassa (County - online), Darcy Pruitt (County)

Agency Staff Present: Bret Williamson (County-online), Christina Horvat (County), Mary Ann LoBalbo (County), Mindy Esqueda (Scotts Valley).

Guests Present: E. Jacob Somera (Terranova Bioremediation, guest presenter), Jakki Castorena-Davila (Environmental Innovations, guest presenter), Laura Chain (CalRecycle–online).

- 2) **Oral communications – Public:** No oral communications received from the public.
- 3) **Oral communications - Task Force members/alternates:** No oral communications received from members/alternates.
- 4) **Review Meeting Minutes** – Jacob Guth made a motion to approve the December 4, 2025 meeting minutes. Antonio Banderas seconded. The motion passed unanimously.
- 5) **Jurisdictional Updates** – Watsonville and the County provided updates to the Task Force:
 - a. Watsonville provided information on its progress to update the city's bag reduction ordinance. Watsonville's City Council approved the ordinance amendments proposed by the Task Force and the ordinance is in effect.
 - b. County staff provided brief updates.
 - i. The County's Waste Characterization Study samples were collected in the week of February 6th. SCS Engineers submitted a draft report and County staff are reviewing the draft report.
 - ii. The County applied for and was awarded a Household Hazardous Waste (HHW) Construction Grant for \$250,000 dollars to offset some of the costs of HHW collection facility upgrades planned as part of the Ben Lomond Transfer Station

Project. The Ben Lomond project is scheduled to begin in June 2026 and will benefit all county residents that share use of the Ben Lomond HHW facilities.

- iii. The County's Buena Vista HHW collection facility has begun accepting end-of-life solar panels by appointment. The program is fee based and includes a state-mandated 220 lbs. per visit acceptance limit. The program accepts both broken (\$100/panel) and intact (\$65/panel) solar panels. Charges cover the County's packaging and disposal costs. Solar panels are classed as universal waste because they contain heavy metals and must be handled by a certified hauler. The County's program is intended to reduce the number of illegally dumped solar panels throughout the County.

- 6) **Guest Presentation on Polyurethane Recycling and Circularity (Attachment 1)** – Jacob Somera of startup TerraNova Bioremediation made a presentation to the Task Force on TerraNova's research and development (R&D) work to create a true loop for polyurethane feedstock development and circularity to shift production from a petrochemical based disposable product to renewable feedstock through the reuse of waste materials that can be reused again and again.

Current polyurethane production focuses on either production from oil extraction or single step recycling that focuses on obtaining a renewable feedstock but does not provide for circularity. TerraNova is in an advanced R&D stage to recycle plastic waste (Monomer A - polyamines) and organic waste (Monomer B- polycyclic carbonate) to make the two materials needed to make recycled polyurethane from waste products (plastics and organic waste).

TerraNova has developed the processes necessary to use fungi to ferment the two waste streams needed to make the two monomers needed. They are working with regional manufacturers to optimize and scale up their fermentation process to develop market ready raw materials. Their goal is to divert waste and reduce the need for off-shore drilling. TerraNova seeks to develop local/regional waste diversion partnerships to obtain waste materials that can be fermented into the raw materials needed by chemical manufacturers to produce new polyurethane products.

City of Watsonville, City of Santa Cruz, and County agreed to provide contact information and support TerraNova's R&D work by providing the waste materials needed to scale their fermentation processes.

- 7) **Reusable Dishware Discussion (Attachment 2)** – Jakki Castorena-Davila of provided an in-depth overview of the issues to introduce reusable dishware at scale that should be considered before deciding to implement a mandatory reusable dishware ordinance. The presentation provided an overview of the information given to the Task Force in December. Jakki also provided additional information on different dishwashing models and the costs to implement an on-site model.

The primary reason to focus on reusable dishware is that it offers a reliable, cost-saving way to reduce single use plastic waste, especially for dine-in service. Many food service providers already use some reusable items, adding more reusable dishware is easy to scale with the right kind of support, and offers a straightforward program to food service providers.

The presentation included new information on three (3) reusable dishwashing models that support reusable dishware programs:

- Onsite dishwashing model - most common choice to incorporate dishwashing machines and staff to wash dishes where they're used. Most resilient and efficient since the system (dishes, staff, place of use) is centralized and not impacted by outside forces.
- Centralized dishwashing model - commercial dishwasher at a central location where staff

collect used dishware, wash it, and return it sterilized for reuse. Works well for centralized kitchens that deliver food and backhaul dishes w/no added trips.

- **Offsite Model** – Kitchen hires third-party dishwashing service to collect used dishware to wash offsite and return for reuse. Expensive but good when onsite dishwasher isn't feasible.

The presentation included sample costs for on-site dishwashing at a school site that serves 300 meals/day (54,000 meals/year). The initial one-time investment cost estimate to purchase the dishwasher, dish washing support equipment, dish collection station equipment and stainless steel reusable dishware (\$31,588), ongoing annual costs for added labor, dishwasher maintenance, dish soap, utilities, and replacement dishware (\$4,757) and ongoing annual savings for avoided costs to buy disposable dishware and pay for waste hauling (\$5,880).

The presentation also covered options to use services that wash reusable dishware off site for large venues, schools, and other sites where dishwashing on-site doesn't work. While off-site models are the most expensive to operate long-term, they avoid significant startup costs seen in on-site dishwashing models.

8) SB 54 Update (Attachment 3) – County Staff walked through the SB 54 needs assessments that were published at the beginning of 2026:

- **Source Reduction Baseline Survey** – establishes the baseline weight and number of plastic covered materials sold into California in 2023 to set the 25% reduction target.
- **Collection, Processing & End Markets Studies** -evaluates current infrastructure to manage covered material and the actions and investments needed to meet the recyclability, compostability, and recycling rates required by SB54.
- **Source Reduction & Material Design Studies** - evaluates existing source reduction, reuse & refill infrastructure, covered material design considerations, and source reduction needed to meet SB 54 requirements.
- **Consumer Education & Access Study** - evaluates local access to source reduction, reuse/refill, recycling, and composting services. Also assesses opportunities to improve local recycling & composting in a changing system.

On January 1, 2026, CalRecycle published their SB 54 updated Covered Materials Category (CMC) list. The new CMC list includes recycling rates for all SB 54 covered materials or notes where insufficient information is available to calculate the current statewide recycling rate. Corrugated cardboard, white paper, and glass already meet or exceed the 65% recycling goal set by SB54. Metal containers, including aluminum and bimetal cans, are recycled less frequently at a rate between 40-45%. Most other covered materials, especially plastic, are recycled less than 20% of the time.

On January 9, 2026, Cal Recycle withdrew proposed SB 54 regulation from the Office of Administrative Law's review. Cal Recycle noted their plan to revise food and agricultural commodities packaging regulations. The prior regulations would have created a loophole allowing food and agricultural producers to use plastic packaging in the marketplace for those commodities that would undermine SB 54's goals.

On February 6, 2026, an Oregon federal trial court issued an injunction that may dismantle Oregon's Plastic Packaging Extended Producer Responsibility [EPR] law on Constitutional grounds. The potentially conflicting requirements of Oregon's and other state's plastic packaging EPR laws could impermissibly affect interstate commerce. A major issue in the case is whether a state compel plastic producers to join a private Producer Responsibility Organization, accept non-negotiable contracts, and submit to a fee-setting process that is both opaque and changeable, without meaningful public oversight or recourse. Future case rulings could impact other EPR laws, like California's SB 54.

- 9) **SB 1053 Update (Attachment 4)** – County Staff provided the status of County Code Chapter 5.48 update. The proposed revisions discussed in the Task Force have received additional scrutiny when returned to County Counsel for review prior to delivery to the Board of Supervisors to request approval. County staff will provide additional updates once the counsel recommendations and text amendment proposals are complete.
- 10) **Legislative Update** – County Staff provided an overview of bills passed and bills the passed through the legislature but were vetoed by the Governor in the 2025 legislative cycle. Two of the composting bills we were watching passed and became law: AB 411 which allows composting of certain livestock carcasses and AB 279 increases the size of permit exempt agricultural composting operations that meet specific feedstock, volume, and zoning requirements. Many of the bills we were watching languished in committee and may be taken up in 2026. These bills include AB 864 which would require DTSC to develop rules to increase material recovery from solar photovoltaic panels and SB 377 which would require the Public Utilities Commission to work with the Air Resources Board to advance the development and use of biomethane.
- 11) **Call for meeting agenda items: Discussion re durables, SB 54 update, Portland’s deconstruction program**
- 12) **Meeting Adjourned at 4:53**

TerraNova Bioremediation Corporation



A True Loop for Polyurethanes

3.05.2026

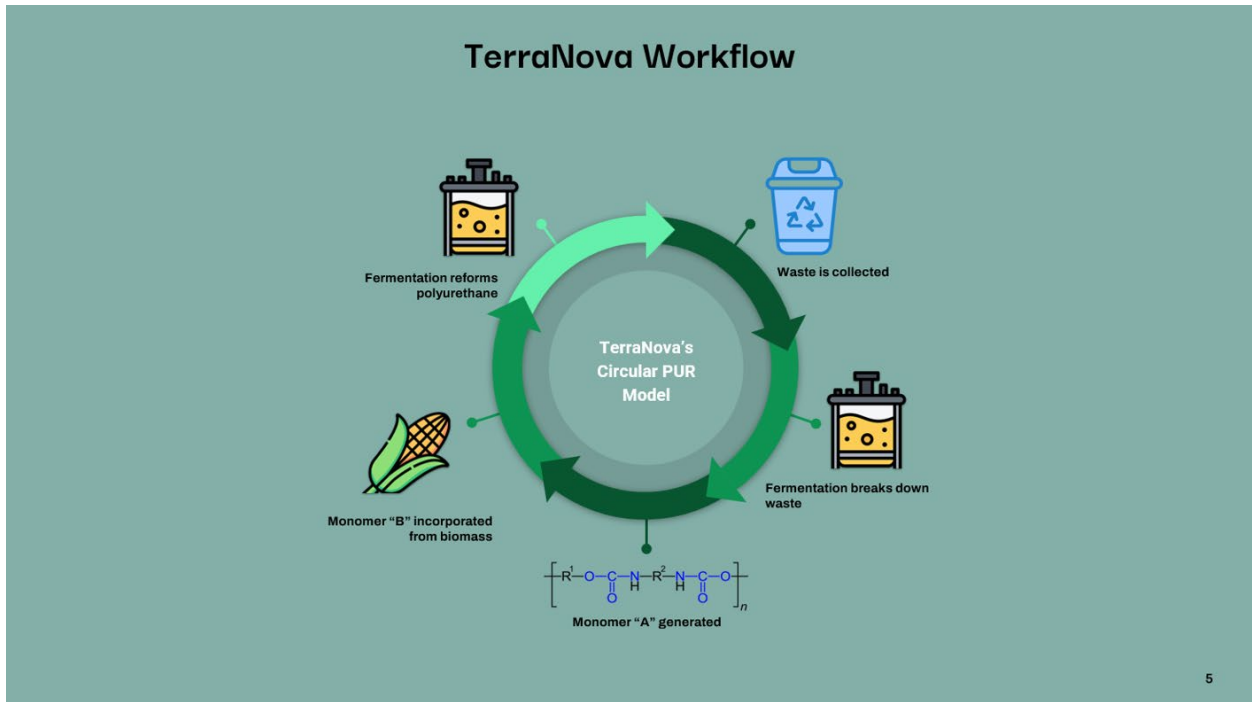
The Global shift from petrochemicals starts here:





COMPARATIVE ANALYSIS

	Renewable Feedstock	End-of-Life Solution	Circularity
TerraNova Bioremediation	Yes	Yes	Yes
Alternative PUR Companies	Yes	No	No
Oil-derived PUR	No	No	No



TerraNova Bio's Solution

Organic Waste

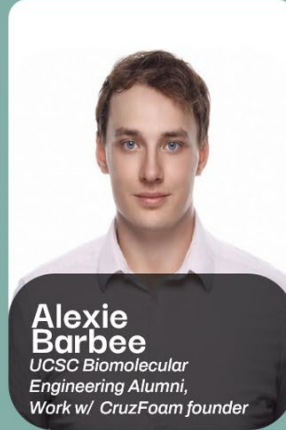
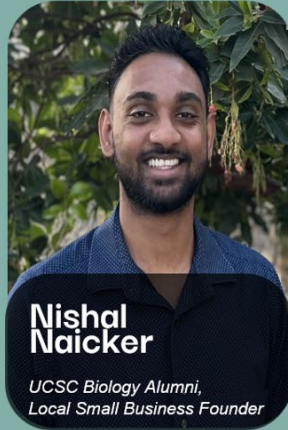
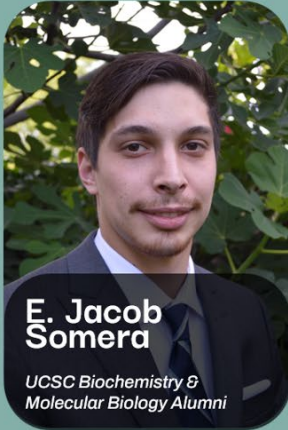
PUR Waste

Polyhydroxyurethane (PHU)

- Fungi break down PUR in 1-2 weeks
- Can be optimized to days/ hours
- Monomer A = polyamines
- Monomer B = polycyclic carbonate
- PUR waste → polyamines
- Organic waste → fats, oils → polycyclic carbonates
- Polyamines & polycyclic carbonates = safe alternatives to petrochemical monomers

6

MEET THE TEAM



Our Story

- Started at UC Santa Cruz
- All fungi collected from Santa Cruz Mountains
- Now working at Wrigley Building
- Working to scale our lab-scale R&D
- Engaging with regional manufacturers (Design Octaves)

Go-to-Market Strategy

- Vertically integrated cities (Santa Cruz + Watsonville)
- Waste streams are already separated
- Regional commerce + public interested in our technology
- City can purchase/ license technology
 - Offsets time spent selling
 - More time for innovative research
- Common goal of waste diversion + no offshore drilling

Pilot in Santa Cruz Co.

Over next 1.5 years, we can develop a pilot to divert waste

Click to add subtitle
9

What Waste Streams Can be Used? - PUR Waste (US #7, China #113)

Material	Quantity	Where	Notes
Mattresses	1	Landfill - SC City	Bye Bye Mattress
Carpet Padding	1 Bin	GreenWaste	Not carpet itself
Insulation Foam (Construction)	1 Bin	TBD	Inside walls, ceilings,
Scrap Waste	10-20 pounds	Local Businesses	Leftovers from manufacturing

10

What Waste Streams Can be Used? - Organic Waste

<u>Material</u>	<u>Quantity</u>	<u>Where</u>	<u>Notes</u>
Agricultural Biomass	1 55 gallon drum	Landfill - SC City	Various waste
Grease Traps	5-10 gallons	TBD	From Restaurants, Biofuels
Yard Waste	1 Bin	TBD	Needs more R&D

11

What Waste Streams Can be Used?

- **Organic Waste (anything with fats, oils, grease)**
 - Agricultural waste
 - Biomass
 - No R&D on ag plastics but there is potential
 - Hoses, irrigation lines
 - Generally not used in sheets
 - Focus on seeds and skins, but anything really:
 - Grapes, tomatoes, corn, almonds, melons, banana peels, etc.
 - Pumice from crushes
 - Yard Waste
 - Grease/ oil traps from restaurants

12

Thank You!

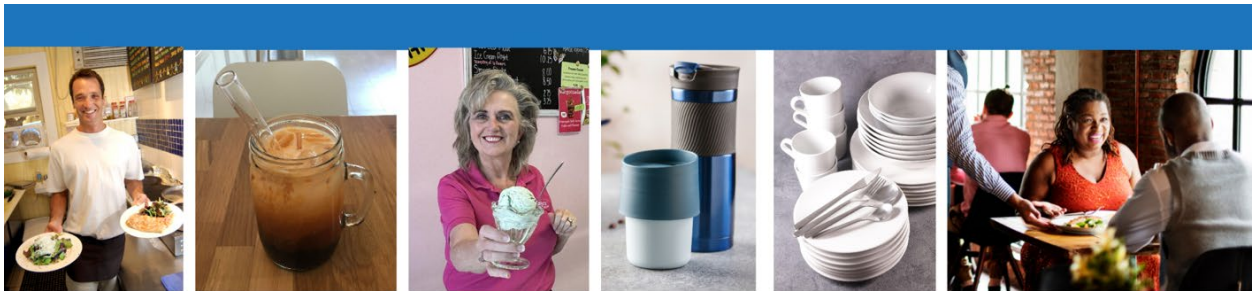
**TerraNova Bioremediation
Corporation**





Reusable Dishware Discussion Solutions for Different Settings

Santa Cruz County Integrated Waste Management Local Task Force
March 5, 2026



Reusable Dishware Programs: Case Studies, Lessons & Opportunities
Santa Cruz County Integrated Waste Management Local Task Force





Different Municipalities: Voluntary vs Mandated Initiatives

Disposable Foodware Ordinances

- Styrofoam bans
- Compostable foodware
- Fiber-based compostable foodware
- Reusables for Dine-in
- Accessories by Request (AB 1276)

Voluntary Programs (Incentive-based)

- Reusable Assistance Grants
- Green Business Assistance
- Reuse To Go Programs



Why Prioritize Reuse?

- Compostable product standards, costs, availability, and functionality are challenging for businesses
- Waste haulers and composters often give mixed messages about what's acceptable
- SB 54 rules are still evolving, adding uncertainty
- Reuse offers the most reliable, cost-saving way to cut single-use plastic waste - especially for dine-in

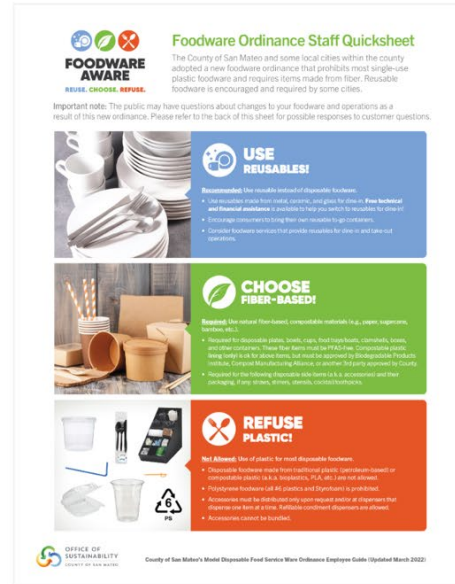


March 5, 2026 Task Force Meeting Minutes
 [Attachment 2]
 Environmental Innovations – Reusable Dishware Discussion Presentation Slides



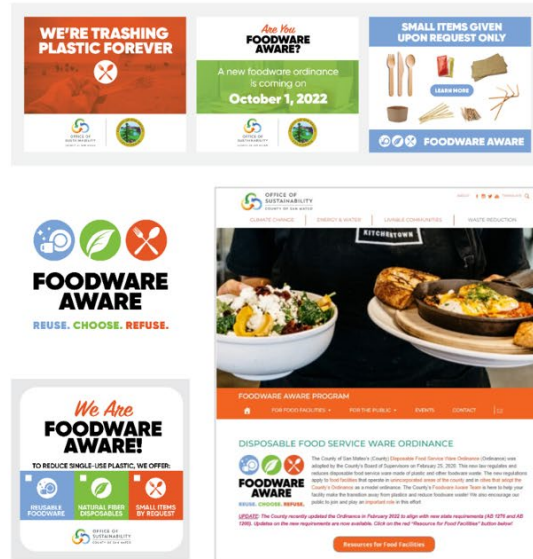
San Mateo County (SMC):
 A County-Led Framework

- County adopted a Model Foodware Ordinance
 - Fiber-base compostables
 - Reuse encouraged, not required
 - Accessories by request (AB 1276)
- 17 jurisdictions adopted (3 incorporated reusable requirement)
- County leads education and enforcement for adopting cities
- Provides a unified, consistent approach for thousands of food facilities
- Foodware Aware Program offers outreach, education, technical assistance, and resources



SMC Foodware Aware Campaign:
 A proven model for success

- Developed program branding, educational materials and website
- Created purchasing guides, window clings, table tents and signage
- Sent 4,580 mailers, completed 2,281+ calls and site visits, and provided 507 technical assistance sessions
- 140+ reuse grants to transition businesses
- Culturally competent outreach via Spanish and Chinese-speaking CBO partners
- Expos and vendor partnerships





Example of Custom Resources

ASK FOR ACCESSORIES
(also required by state law AB 1276)
PREGUNTE POR ACCESORIOS
(también lo exige la ley estatal AB 1276)

Help Us Reduce Waste
Ayúdenos a reducir los residuos

smcfoodware.org

COUNTY OF SAN MATEO
Plastic-Free Guide for Boba Shops

The San Mateo County Disposable Foodware Ordinance bans single-use plastic foodware, including compostable plastic (bioplastic, PLA, CPLA, TPLA), for drinking cups, utensils, straws, and food containers. Instead, restaurants and cafes are required to use fiber-based compostable foodware or reusable foodware. Boba shops across the Bay Area have successfully made this switch and are taking other actions to be more sustainable.

Urban Ritual | San Mateo, CA

- Eliminated plastic cups and implemented branded fiber boba cups, lids and straws.
- Partnered with Okapi Reusables to offer a rentable reusable cup service.
- Market their sustainability efforts as a marketing tool to get more customers.

Nano's Ohana | Half Moon Bay, CA

- Sells branded reusable boba cups that come with a reusable lid and straw.
- Customers receive a discount when they bring their own boba cup or straw.
- Invested in reusable foodware for special weekend menu items, which saves the business \$3,300 every year.

Mr. Green Bubble Tea | Menlo Park, CA

- Provides drinks in reusable mason jars.
- Uses reusable baskets, utensils, and a bussing station with eye-popping signage for their customers.
- Promotes dining on-site, which elevates the entire cafe experience as a memorable event.
- Uses a separate and detachable lid rather than a seal.

Teaspoon | Palo Alto, CA

- Serves boba tea in reusable mason jars with reusable straws when the customer stays on-site. Serves water in reusable plastic tumblers.
- A Bring-Your-Own cup discount is highly visible to guests.
- Developed a Bubble Straw Club with Girl Scout Troop 60016. Customers receive a free boba tea after bringing their own reusable straw 25 times.
- Sells stainless steel straws and branded boba tea cups in the cafe.



Why the SMC Model Matters for Santa Cruz County

- Demonstrates how a County can lead a multi-city rollout
- Reduces duplication of effort for each city
- Ensures consistent messaging to businesses
- Even voluntary reuse adoption increases when supported with:
 - Education
 - Materials
 - Technical assistance
 - Mini-grants





Reuse for Dine-In: Low Hanging Fruit

- Many restaurants already use some reusable items
- Delivers meaningful cost savings for businesses
- Improves the dining experience and presentation
- Easy to scale with jurisdiction support
- Clear, straightforward requirements for operators
- Fewer operational barriers than switching to compostables or other single-use alternatives
- Source reduction: turns off the single-use “spigot” entirely



ReUse Assist Mini-Grant Program

Make the Switch to Reusables
Save Money • Improve Customer Experience • Reduce Waste



Replacing disposable foodware with real plates, cups, and utensils can save \$2,000 - \$10,000 per year.

Get up to \$500 in FREE reusable foodware and hands on support!

STOPWASTE | ReUse Assist

- **5-Step Model:** Recruit → Identify → Deliver → Support → Track
- Works with or without ordinance
- Helps overcome business cost & capacity barriers
- Captures metrics
- Scalable pilot-to-citywide approach

300 conversions and counting

Implemented in Seaside, Cupertino, Sunnyvale, Oakland, Alameda County, and San Mateo County

March 5, 2026 Task Force Meeting Minutes
[Attachment 2]
Environmental Innovations – Reusable Dishware Discussion Presentation Slides



Reuse Solutions for Take-Out

Third Party Reusable Services

Example - Okapi: App-based reusable dishware rental services available at restaurants and cafes



BYO Education Campaigns

Normalize bringing your own cup or container and help businesses implement BYO-friendly practices



Lessons Learned - What Works Best

1. Provide simple, clear requirements for dine-in
2. Provide multiple outreach touchpoints including 1:1 outreach
3. Provide grants or incentives to offset upfront cost
4. CBO partnerships to reach immigrant-owned businesses
5. Produce consistent materials across jurisdictions
6. Provide opportunities and signage
7. Explore to-go system partnerships and BYO campaigns



Reusable Dishwashing Models



Onsite Model – The most common reusable food ware choice with dishwashing machines and staff to wash dishes where they're used

- Most resilient as problems at other sites don't affect onsite dishwashing system



Centralized Model – With a commercial dishwasher at a central location, staff collect used food ware, wash it, and return it sterilized for reuse

- Model works well for centralized kitchens that deliver food and backhaul dishes w/no added trips.



Offsite Model – Kitchen hires a third-party service to collect used food ware, wash it offsite, and return it for reuse

- Expensive alternative, but good for pilot programs or when new dishwashers aren't feasible.

Sample School One Time Costs

[54,000 meals/year (300 meals/day)]



Item	Details	Approximate Costs/Savings	Notes
▶ Upfront (One-Time) Costs			
Dishwashing machine	Door-type, high temp, 40 racks per hour. Cost includes installation.	\$26,000	Each rack fits 13 trays or 50 utensils, resulting in 30 racks needed for 300 sets of dishes.
Dish Room Support Equipment	6 dish racks, 1 dish rack shelf, 1 dish rack dolly, 4 flatware baskets, 2 utensil organizers, 1 floor mat, 3 dishwashing aprons, 1 dish drying rack	\$2,171*	
Collection Station Equipment	1 dish cart, 3 bus tubs	\$143*	Cost does not include collection station signage (recommended).
Stainless-steel Reusable Foodware	345 each: trays @ \$8.85, forks @ \$0.36, spoons @ \$0.28	\$3,274*	Buy approximately 15% more foodware than meals served.
Total upfront costs		\$31,588	

Sample Annual Costs & Savings [54,000 meals/year (300/day)]



▶ Ongoing Annual Costs			
Dish machine repair & maintenance	Average cost of one service/repair call per year	\$374	
Additional Labor	Nutrition Service Assistant, 1 hr/day, 180 days	\$3,150	Based on estimate of \$17.50/hr
Dish machine chemicals	Detergent, Drying agent	\$541*	
Utilities		\$550	Based on average US (water) and CA (electricity) rates in 2025.
Foodware replacements	12 trays, 100 utensils	\$142	
Total annual costs		\$4,757	
▶ Ongoing Annual Savings			
Avoided purchases of disposable foodware	Plastic spork kits @\$0.02, molded fiber trays @\$0.08, 54,000 meals/yr	\$5,400	
Reduced waste hauling costs	1 cy/week reduction in garbage volume.	\$480	Based on 2025 Fremont Unified School District collection rates.
Total annual savings		\$5,880	

Example Onsite Dishwashing



SCHOOL SPOTLIGHT: CRAGMONT ELEMENTARY IN BERKELEY, CA

Cragmont Elementary School in the Berkeley Unified School District serves 155 lunches each day, 180 days a year. They replaced disposable molded fiber trays, plastic spork packets and paper cups with stainless steel trays, forks and cups. The reusable foodware, purchased partially with a grant from StopWaste, is washed in Cragmont's existing on-site dish washing machine, with minimal additional labor. The change prevents 100,000 single-use items and saves the school \$500 annually in avoided foodware purchases and reduced waste collection costs.

Special thanks to



For their reusable food ware guide: [RFW-In-Schools-Quick-Guide-20251201-3.pdf](https://www.stopwaste.org/files/2021/01/RFW-In-Schools-Quick-Guide-20251201-3.pdf)

Large Venue Reusables



Portland startup, Bold Reuse, helps sports teams and schools slash waste with “return on site” reusable dishware.

- Durable food ware made from reusable plastics, glass, or steel
- Collected on site, washed off site, returned sanitized for reuse
- Replaces disposable food ware





SB 54 Updates:

- **Needs Assessments Published,**
- **CMC List w/Recycling Rates Released,**
- **Federal Injunction in Oregon Plastic Extended Producer Responsibility (EPR) Lawsuit, and**
- **SB 54 Regulations Delayed**

Santa Cruz County Integrated Waste Management Local Task Force
March 5, 2026

CalRecycle Published Eight (8) Needs Assessment Reports



- [The Current State of Collection Report](#)
- [The Current State of Processing Report](#)
- [The Current State of End Markets Report](#)
- [The Needed State of Collection Processing and End Markets Report](#)
- [Evaluation of Reuse and Refill Systems and Covered Materials that Utilize Other Source Reduction Strategies](#)
- [Analysis of Actions & Investments Needed to Achieve Source Reduction Goal](#)
- [Consumer Education and Access Report](#)
- [Statewide Needs Assessment Summary Report](#)

Needs Assessments Evaluate Management to Meet SB 54 Goals



Source Reduction Baseline Survey – establishes the baseline weight and number of plastic covered materials sold into California in 2023 to set the 25% reduction target.

Collection, Processing & End Markets Studies – evaluates current infrastructure to manage covered material and the actions and investments needed to meet the recyclability, compostability, and recycling rates required by SB54.

Source Reduction & Material Design Studies – evaluates existing source reduction, reuse & refill infrastructure, covered material design considerations, and source reduction needed to meet SB 54 requirements.

Consumer Education & Access Study – evaluates local access to source reduction, reuse/refill, recycling, and composting services. Also assesses opportunities to improve local recycling & composting in a changing system

Updated SB 54 Covered Material Category (CMC) List



Table 1. Covered Material Category List (As of January 1, 2026)

Category ID	Material Class ¹	Material Type ¹	Form ^{2,3}	Recyclable ⁴	Compostable ⁴	Recycling Rate ^{5, 6, 7}
25_G1N	Glass	Glass	Bottles and Jars w/o plastic component	Y		65%
25_G1P	Glass	Glass	Bottle and Jars w/ plastic component	Y		
25_G2N	Glass	Glass	Other Forms w/o plastic component			
25_G2P	Glass	Glass	Other Forms w/ plastic component			
25_G3N	Glass	Glass	Small – Two or more sides measuring 2" or less w/o plastic component	Y		
25_G3P	Glass	Glass	Small – Two or more sides measuring 2" or less w/ plastic component	Y		
25_C1N	Ceramic	Ceramic	All Forms w/o plastic component			0%
25_C1P	Ceramic	Ceramic	All Forms w/ plastic component			Insufficient Information
25_C2N	Ceramic	Ceramic	Small – Two or more sides measuring 2" or less w/o plastic component			
25_C2P	Ceramic	Ceramic	Small – Two or more sides measuring 2" or less w/ plastic component			

March 5, 2026 Task Force Meeting Minutes
 [Attachment 3]
 SB 54 Updates - Presentation Slides

Updated SB 54 Covered Material Category (CMC) List



Category ID	Material Class ¹	Material Type ¹	Form ^{2,3}	Recyclable ⁴	Compostable ⁴	Recycling Rate ^{5 & 7}
25_M1N	Metal	Aluminum	Non-aerosol container w/o plastic component	Y		<39%
25_M1P	Metal	Aluminum	Non-aerosol container w/ plastic component	Y		
25_M4P	Metal	Aluminum	Aerosol can w/ plastic component	Y		
25_M2N	Metal	Aluminum	Foil sheets w/o a plastic component	Y		<9%
25_M2P	Metal	Aluminum	Foil sheets w/ a plastic component	Y		
25_M3N	Metal	Aluminum	Foil Molded Containers w/o plastic component	Y		
25_M3P	Metal	Aluminum	Foil Molded Containers w/ plastic component	Y		
25_M5N	Metal	Aluminum	Other Forms w/o plastic component	Y		
25_M5P	Metal	Aluminum	Other Forms w/ plastic component	Y		<45%
25_M6N	Metal	Tin/Steel/Bimetal	Non-aerosol container w/o plastic component	Y		
25_M6P	Metal	Tin/Steel/Bimetal	Non-aerosol container w/ plastic component	Y		
25_M7P	Metal	Tin/Steel/Bimetal	Aerosol can w/ plastic component	Y		
25_M8N	Metal	Tin/Steel/Bimetal	Other Forms w/o plastic component	Y		
25_M8P	Metal	Tin/Steel/Bimetal	Other Forms w/ plastic component	Y		

Updated SB 54 Covered Material Category (CMC) List



Category ID	Material Class ¹	Material Type ¹	Form ^{2,3}	Recyclable ⁴	Compostable ⁴	Recycling Rate ^{5 & 7}
25_PF8N	Paper and Fiber	OCC	Waxed Cardboard w/o plastic component		Y	0%
25_PF8P	Paper and Fiber	OCC	Waxed Cardboard w/ plastic component			
25_PF9N	Paper and Fiber	OCC	Cardboard w/o plastic component	Y	Y	68%
25_PF9P	Paper and Fiber	OCC	Cardboard w/ plastic component	Y		
25_PF10N	Paper and Fiber	Paperboard	All Forms w/o plastic component	Y	Y	30%
25_PF10P	Paper and Fiber	Paperboard	All Forms w/ plastic component	Y	Y*	
25_PF11N	Paper and Fiber	White Paper	All Forms w/o plastic component	Y	Y	71%
25_PF11P	Paper and Fiber	White Paper	All Forms w/ plastic component	Y	Y*	
25_PF12N	Paper and Fiber	Other/Mixed Paper	All Forms w/o plastic component	Y	Y	
25_PF12P	Paper and Fiber	Other/Mixed Paper	All Forms w/ plastic component	Y	Y*	Insufficient Information
25_PF16N	Paper and Fiber	Paper and Fiber	Small – Two or more sides measuring 2" or less w/o plastic component		Y	
25_PF16P	Paper and Fiber	Paper and Fiber	Small – Two or more sides measuring 2" or less w/ plastic component		Y*	
25_P1P	Plastic	PET (#1)	Bottles, Jugs, and Jars (Clear/Natural)	Y		16%
25_P2P	Plastic	PET (#1)	Bottles, Jugs, and Jars (Pigmented/Color)	Y		5%

Federal Injunction Prohibits Enforcement of Oregon's EPR



On February 6th a federal trial court issued a 2-page injunction that may set the stage to dismantle Oregon's Plastic Packaging Extended Producer Responsibility [EPR] law on Constitutional grounds.

- **Dormant Commerce Clause:** The potentially conflicting requirements of Oregon's and other state's plastic packaging EPR laws could impermissibly affect interstate commerce.
- **Procedural Due Process:** The transparency problem - Can a state compel plastic producers to join a private PRO, accept non-negotiable contracts, and submit to a fee-setting process that is both opaque and changeable, all without meaningful public oversight or recourse?

Case rulings could impact other EPR laws, like California's SB 54

SB 54 Regulations Delayed



On January 9, 2026, CalRecycle withdrew proposed SB 54 regulations from the Office of Administrative Law's review, noting its plan to revise regulations on food and agricultural commodities packaging.

Anja Brandon, the Ocean Conservancy's director of plastics policy, said she was not surprised by the withdrawal, stating:

"The draft [SB 54 regulations] proposed would have gone beyond CalRecycle's authority by creating a sweeping categorical exclusion for food and agricultural packaging — effectively a loophole that would have allowed producers to continue putting vast amounts of plastic packaging into the marketplace, completely undermining SB 54's goals and success."

Federal Injunction Limits Oregon's EPR enforcement



Why This Case is a Harbinger for EPR Programs: For years, state EPR laws have been described as an inevitable response to global recycling market failures and municipal budget deficits.

- Until now, no federal court had signaled discomfort with the legal theory behind Extended Producer Responsibility laws.
- That changed when Oregon's system collided with well considered constitutional limits on state power.

The question for the court: how far can states go in outsourcing regulatory power to a single, privately run Producer Responsibility Organization and tying participation in the state's economy to paying fees that businesses say they cannot see, test, or challenge?



SB 1053 – Plastic Bag Ban County Update

Santa Cruz County Integrated Waste Management Local Task Force
March 5, 2026

Carryout Bag Requirements Ordinance Considerations



- **Regulating Stores Defined by State Law:** Local jurisdiction's regulations cannot exceed state law requirements when a state defined "store" is involved.
- **County Code Definition of Retail Establishment:** County's ordinance includes a "retail establishment" definition that exceeds the state's definition of "store." The County definition includes restaurants, food trucks, and others who sell goods direct to consumers.
- **Film Plastic Carryout Bag Bans:**
 - State law only eliminates film plastic carryout bags in "stores"
 - Local jurisdictions have discretion to ban film plastic carryout bags beyond the state's regulation of "stores."

New Carryout Bag Requirements SB 1053

Local Ordinances Across California

Every store throughout California must comply with the requirements of the law, regardless of where the store is located. If the store is in a city or county that has its own bag ordinance, however, the store may need to comply with the local requirements as well.

[A list of cities and counties that have adopted bag ordinances is available.](#) This page may not contain every local jurisdiction in California with an ordinance that restricts or prohibits the use of certain bags. We recommend checking with your local city or county authority to verify whether your city or county has its own bag ban ordinance that is in effect.



Questions?
Thank you!