

**SANTA CRUZ COUNTY**  
**INTEGRATED WASTE MANAGEMENT LOCAL TASK FORCE**  
**Thursday, September 4, 2025, 3:01 – 4:41 pm**  
**Santa Cruz Civic Auditorium – Tony Hill Room**  
**300 Church Street Santa Cruz CA 95060**



**Meeting Minutes**

- 1) **Welcome and Quorum Verification:** Quorum was present in the room but both chair and vice chair were absent at 3:00pm, the meeting start time. Citizen Representative, Jacob Guth volunteered to act as chair and called the meeting to order at 3:01 pm. Staff called roll and meeting attendance was noted as follows:
  - Voting Members/Alternates Present: Jacob Guth (County, citizen rep/volunteer chair), Justin Cummings (County, arrived at 3:15), Felipe Hernandez (County, chair arrived at 3:20), Bob Nelson (Santa Cruz), Scott Newsome (Santa Cruz), Will Smith (Watsonville), Tami Stolzenhaler (Watsonville, alternate).
  - Non-voting Members/Alternates Present: Leslie O'Malley (Santa Cruz, alternate - both members present), Antonio Banderas (Watsonville, alternate - not yet sworn).
  - Members/Alternates Absent: Sandy Brown (County, alternate), Ramon Gomez (County, alternate), Erika Senyk (Capitola), Allan Timms (Scotts Valley), Rodolfo Onchi (Scotts Valley, alternate), Rene Golder (Santa Cruz, alternate), Ari Parker (Watsonville, vice chair).
  - Task Force Staff Present: Beau Hawksford (County), Kasey Kolassa (County - online), Darcy Pruitt (County)
  - Agency Staff Present: Mary Ann LoBalbo (County)
  - Guests Present: Claudia Villalta-Mejia (Environmental Innovations), Laura Chain (CalRecycle – online), Kelly Murray (Grey Bears – online).
- 2) **Oral communications – Public:** (none).
- 3) **Oral communications - Task Force members/alternates:** (none)
- 4) **Approve Meeting Minutes** –B. Nelson made a motion to approve the June 5, 2025 meeting minutes, W. Smith seconded the motion. Volunteer chair Guth called for a vote by members present at the June meeting. June meeting minutes were unanimously approved.
- 5) **Jurisdictional Updates** – County staff member, Beau Hawksford made two announcements to the Task Force:
  - i) The Ben Lomond Transfer Station rehabilitation project will go back out to bid in February 2026. The project includes seismic, electrical, and facilities updates, many of them designed to provide more covered storage areas to improve stormwater quality. The project was delayed because during the prior bid solicitation, the County rejected the one bid it received based on price and responsiveness. The County hopes to be in contract and under construction by June 2026.
  - ii) The County received notice from Downtown Streets, its litter abatement contractor, that it will be closing by the end of October 2025. Currently, Downtown Streets provides litter pickup services along the north coast beaches, in the San Lorenzo Valley, and other areas of the unincorporated County. Their program also includes job training for homeless individuals. The County has been in contact with many of the partner organizations that will be affected by the change in service with the sudden loss of the County's litter abatement service provider. The County is still looking for a State Parks contact to plan next steps.

- 6) **Watsonville Landfill Update Presentation** – Tami Stolzenhaller, Senior Environmental Projects Analyst provided an overview of Watsonville’s landfill development project. Watsonville’s landfill has been in operation since 1962. Five cells were permitted. Cells one & two are already closed and Cell three was in operation between 1995 and 2020. Seventy-five years of air space are left in Cells four and five. The soil from digging out Cell four was used for final cover on Cell three. Cell four was opened on April 15, 2025. The Watsonville Landfill project includes a new scale system with RFID reader and is only open for Watsonville collection trucks. All excess waste from the City of Watsonville can be taken to the Harvest Drive Drop Off Center. Landfill Operations are currently building a five-foot protective layer to protect the landfill liner for the long term. A two-foot layer of native dirt covered the liner, followed by this five-foot layer of residential only garbage. After this protective layer is established, the trash layers added above can be compacted. The City of Watsonville landfill is managed by three Landfill Operators. Ray Martin is Manager of Landfill Operations and a certified Integrated Waste Superintendent.

Cell four is constructed in the following layers from bottom to top: 1) Native subgrade, 2) Compacted Clay, 3) 40 mil HDPE geomembrane, 4) Synthetic clay layer, 5) 60 mil HDPE geomembrane, 6) 9” gravel drainage layer, 7) 8oz geotextile, 8) 24” Protective soil cover 9) Waste.

The landfill includes a leachate collection system that collects garbage contact water and includes a lysimeter. The lysimeter is a monitoring device designed to collect leachate as it percolates through landfill waste. By collecting and measuring the volume and chemical composition of the leachate, researchers can determine the status of the landfill liner and potential impacts to the environment. Liquids in the pipe on the bottom could indicate that the liner is torn. A video camera is used to inspect the lysimeter line. Garbage contact water in cell 3 drains to leachate recovery and/or leachate recovery tanks. Leachate is pumped into a tanker truck and brought to the City’s Wastewater Recycling Plant nearby on Beach Street for treatment.

Rainwater is collected and channeled to a separate drainage system to limit the amount of leachate produced in the landfill. Stormwater is transported in a series of V-ditches installed around the perimeters of cells 3 and 4 that lead to a sedimentation pond. All stormwater outlets are inspected following rain events over 1.5” in any 24 hour period. Landfills are the most highly regulated land uses in California. The Watsonville landfill is inspected by County Environmental Health, State Water Resources Control Board, CalRecycle, and Monterey Bay Air Resources District.

Watsonville offers Landfill facility tours to students and members of the public.

Adults contact: [ray.martin@watsonville.gov](mailto:ray.martin@watsonville.gov) and [tami.stolzenhaller@watsonville.gov](mailto:tami.stolzenhaller@watsonville.gov)

Students in City of Watsonville contact: [gina.carrillo@watsonville.gov](mailto:gina.carrillo@watsonville.gov)

There was a brief question and answer after the presentation focused on the complexity of building and managing a modern landfill. The discussion included descriptions of the monthly reporting requirements, monthly inspections by state and local regulatory agencies, the continuing evolution of regulatory requirements, and the need for long term management, regulatory oversight, and environmental sampling even after the landfill closes and no longer accepts waste to ensure the landfill continues to function without impacts to groundwater and the environment. **(Presentation slides are provided at Meeting Minutes -Attachment A.)**

- 7) **California Redemption Value (CRV) Update** – County staff member, Mary Ann LoBalbo provided an update on the availability of local redemption locations since the Ben Lomond Transfer Station redemption center closed. More stores are redeeming CRV containers in store, however, coverage is spotty, and many stores limit the hours when CRV containers are accepted, especially in the San

Lorenzo Valley where stores were previously covered by the Ben Lomond CRV redemption center. Two CalRecycle websites are available to direct people to local in-store CRV redemption: <https://www2.calrecycle.ca.gov/BevContainer/InStoreRedemption> and to CRV recycling centers: <https://www2.calrecycle.ca.gov/BevContainer/RecyclingCenters>. Members asked questions about how well local CRV redemption is going since Ben Lomond stopped redeeming CRV. County staff has tested two reverse vending machines and in-store CRV redemption. County staff's summary assessment is that the transition to in-store CRV is in progress, but improvements are still needed to provide adequate CRV redemption services in areas no longer served by a recycling center that accepts CRV. Watsonville residents are served by the four (4), and only, CRV redemption centers inside the County. Member Cummings requested that Task Force staff write an informational update for public release through various County channels to inform the public of CRV redemption opportunities in the community. **(Presentation slides are provided as Meeting Minutes - Attachment B.)**

- 8) **SB 54 Update** – County Staff, Darcy Pruitt provided a brief update on SB 54 summarizing the goals of the program to redesign single use packaging to be 100% recyclable or compostable by 2032, to increase actual recycling rates, and to create a circular economy in California. The presentation also included an overview of the status of public comments on CalRecycle's draft SB 54 regulations. The comment period closes on October 7, 2025. Article 11 draft regulations that affect local jurisdictions include short compliance deadlines and could require annual changes to local recycling and composting acceptance policies. Members asked questions based on information included in the presentation slides. J. Cummings made a motion to establish a staff subcommittee of volunteers from each jurisdiction to review draft regulations, prepare staff comments, and deliver those comments to each Task Force member so those comments can be submitted to CalRecycle by the member's jurisdiction after review and approval by their governing bodies. F. Hernandez seconded the motion. J. Guth called for a vote and the motion passed unanimously. **(Presentation slides are provided as Meeting Minutes -Attachment C.)**
- 9) **Countywide Waste Characterization Study** – County staff, Kasey Kolassa provided an update on the County's interest in conducting a waste characterization study and the identified rationale that will guide its methodology. The County determined that it is currently in compliance with CalRecycle regulations for edible food recovery and organic waste recycling Capacity and Procurement of organic waste products. For this reason, the County decided to follow CalRecycle's most recent waste characterization protocols but will not challenge its SB 1383 Capacity targets or its Procurement target under AB 2346. The County's waste characterization RFP requested proposals focused on the Unincorporated County but could be expanded to include waste characterization for city jurisdictions conducted at the County's Buena Vista Landfill site should the cities choose to participate. The County selected SCS Engineers' proposal in response to its RFP for waste characterization study services. SCS Engineers carried out the County's 2018 waste characterization study and its proposal was most responsive to the County's RFP. The SCS proposal included the option for a one-season study or a two-season study. The County shared SCS's proposal with the cities for their consideration. Both the City of Watsonville and the City of Capitola reviewed the proposal and decided not to participate at this time. The City of Santa Cruz expressed interest in the SCS proposal but will proceed separately, using a similar study protocol, but with samples collected and self-haul analysis to take place at the City's Dimeo Lane facility. The City of Scotts Valley did not respond to the proposal and the County plans to proceed with the waste characterization study alone. **(Presentation slides are provided as Meeting Minutes -Attachment D.)**
- 10) **Code Update SB 1053** – Staff provided an update to the Task Force about the bag ban requirements and the need for the County and other city codes to come into alignment with SB 1053's change to state law mandates on carry out bags. The new state law requires an all-out ban on plastic carryout

bags distributed by most grocery, retail stores with a pharmacy, convenience stores, food marts, and liquor stores starting 1/1/2026. The law also requires 50% postconsumer recycled paper in paper carryout bags starting 1/1/2028. Existing local ordinances that conflict with the new state law must be changed before 1/1/2026. County staff plans to update County Code, send the revisions to County Counsel for approval, and share with city jurisdictions so that County Code and city municipal codes will be compatible. **Presentation slides are provided as Meeting Minutes -Attachment E.)**

- 11) **Legislative Update** – County staff provided a brief overview of solid waste related bills introduced in the 2025/2026 legislative cycle and their status. Staff shared that SB 501, that could create an extended producer responsibility program for household hazardous waste recovery and recycling programs; SB 561 that could create extended producer responsibility for explosive marine emergency distress flares, and AB 1153, which would expand the use of funds in the Solid Waste Disposal Site Cleanup Trust Fund for additional illegal dumping site cleanup tasks are all languishing in the legislature.

- 12) **Call for next meeting agenda items:** Members suggested the following items for future meetings:

- a. CRV Update
- b. Update on SB 54 Status
- c. Update on Embedded Batteries
- d. Presentation on Dine-in Reusables

- 13) **Jacob Guth, Citizen Representative and volunteer chair adjourned the meeting at 4:41pm.**





# Watsonville Landfill Update Question & Answer

Santa Cruz County Integrated Waste Management Local Task Force  
September 4, 2025



CITY OF WATSONVILLE

Landfill Cell Update 2025



## LANDFILL HISTORY

- Since 1962
- 5 cells permitted
- Cell 3 1995-2020
- Cell 4 opened April 2025
- 75 years of air space left cells 4,5

## CELL 4 NOW OPEN

- April 15, 2025 Ribbon Cutting
- 4,850 tons April 15 – August 28
- New scale system with RFID reader
- Site not open to public





## LANDFILL LINER PROTECTION OPERATIONS

Building 5 foot  
protective layer under  
trash compaction  
layers before trash is  
compacted



- 3 Landfill Operators
- Integrated Waste Superintendent certified in MOLO
- Equipment: John Deere 762 Scraper; JD 700 Dozer; 624 Loader; CAT D8 Dozer; JD 710A Grader; Leachate Tanker Truck, 816 F Compactor

## CELL 4 CONSTRUCTION

- Waste
- Protective Soil Cover – 24”
- 8 oz Geotextile
- 9” gravel drainage layer
- 60 mil HDPE geomembrane
- Synthetic clay liner
- 40 mil HDPE geomembrane
- Compacted clay
- Native subgrade



## LEACHATE COLLECTION RECOVERY SYSTEM AND LYSIMETER

- Lysimeter system designed to indicate if leachate system is compromised
- Lysimeters on Cell 3 & 4 to detect liner tears





## CELLS 1, 2, 3 CAPPED

- Opened 1995, Closed September 2020
- Leachate management ongoing
- Gas monitoring ongoing
- Stormwater management ongoing



## LEACHATE RECOVERY SYSTEM

\* Contact water  
drains to  
leachate  
recovery and /or  
leachate tanks



## STORMWATER PROTECTION

## LANDFILL REGULATIONS



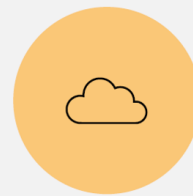
County  
Environmental  
Health



State Water  
Resources  
Control  
Board



CalRecycle



Monterey  
Bay Air  
Resources  
District





**Questions?**  
*Thank you!*



# California Redemption Value (CRV) Santa Cruz County Local Redemption Options

Santa Cruz County Integrated Waste Management Local Task Force  
September 4, 2025

## SB 1013 Statewide CRV Changes



Starting January 1, 2025 or 60 days after a local redemption center closes  
State law requires covered beverage retailers to either:

- Redeem CRV beverage containers in store, or
- Join a “Dealer Cooperative” to redeem CRV beverage containers on their behalf.



September 4, 2025 Task Force Meeting Minutes  
[Meeting Minutes - Attachment B]  
Local CRV Redemption Options Presentation Slides

## How to Find CRV Redemption Locations

In-Store Redemption Services:

<https://www2.calrecycle.ca.gov/BevContainer/InStoreRedemption>



Export to Excel		
Name ↑	Address	City
7-Eleven	5451 Scotts Valley Dr	Scotts Valley
APCO Gasoline	1725 Mission St	Santa Cruz
Beverages and More	1820 41st Ave	Capitola
Brothers Market	202 Buena Vista Dr	Freedom
Cost Plus World Market	450 River St Bldg C	Santa Cruz
Costco Wholesale #149	220 Sylvania Ave	Santa Cruz
CVS Store #3952	783 RIO DEL MAR BLVD	APTOS
CVS Store #9331	600 Front St	Santa Cruz
CVS Store #9332	1700 Mission St	Santa Cruz
CVS Store #9597	1750 41st Ave	Capitola



Recycling Center Redemption Services:

<https://www2.calrecycle.ca.gov/BevContainer/RecyclingCenters>



# September 2025 Update Plastic Pollution Prevention and Packaging Producer Responsibility Act (SB 54)

Santa Cruz County Integrated Waste Management Local Task Force  
September 4, 2025

## SB 54: Standardizes Recycling Programs Statewide



In California, by 2032:



100% of single use  
packaging & plastic single-  
use food ware will be  
recyclable or compostable.



65% of plastic single-use  
packaging & food ware will  
be recycled.  
30% by 2028 | 40% by 2030



25% of plastic single-use  
packaging & food ware will  
be source reduced by  
weight and unit.  
10% by 2027 | 20% by 2030



25% recycling rate for expanded polystyrene food ware  
= banned as of January 1, 2025



# Examples of Redesigned Packaging



# SB 54 Covered Single-Use Materials



Packaging	Plastic food ware
 <p>Includes primary, secondary, and tertiary (transport) packaging Excludes materials covered by other state laws, e.g., grocery and produce bags, CRV containers</p>	 <p>Includes items used to serve or consume food Note: paper items with a plastic component (e.g., lining) are considered "plastic" for compliance purposes</p>

September 4, 2025 Task Force Meeting Minutes  
 [Meeting Minutes - Attachment C]  
 SB 54 Plastic Pollution Prevention and Packaging Producer Responsibility Act Update  
 Presentation Slides

## SB 54 Covered Materials Category List (excerpt)



Table 1. Covered Material Category List (As of January 1, 2025)

Category ID	Material Class <sup>1</sup>	Material Type <sup>1</sup>	Form <sup>2,3</sup>	Recyclable <sup>4</sup>	Compostable <sup>4</sup>
24_G1N	Glass	Glass	Bottles and Jars w/o plastic component	Y	
24_G1P	Glass	Glass	Bottle and Jars w/ plastic component	Y	
24_G2N	Glass	Glass	Other Forms w/o plastic component		
24_G2P	Glass	Glass	Other Forms w/ plastic component		
24_G3N	Glass	Glass	Small – Two or more sides measuring 2" or less w/o plastic component	Y	
24_G3P	Glass	Glass	Small – Two or more sides measuring 2" or less w/ plastic component	Y	
24_C1N	Ceramic	Ceramic	All Forms w/o plastic component		
24_C1P	Ceramic	Ceramic	All Forms w/ plastic component		
24_C2N	Ceramic	Ceramic	Small – Two or more sides measuring 2" or less w/o plastic component		
24_C2P	Ceramic	Ceramic	Small – Two or more sides measuring 2" or less w/ plastic component		
24_M1N	Metal	Aluminum	Non-aerosol container w/o plastic component	Y	
24_M1P	Metal	Aluminum	Non-aerosol container w/ plastic component	Y	

- 25\_PFI7P\* Paper and Fiber / Multi-Material Laminate / Paperboard with a Plastic Coating/Lining
  - New category with material that was previously in 24\_PFI7P Paper and Fiber / Multi-Material Laminate / Other Forms w/ plastic component

Plastic Pollution Prevention and Packaging Producer Responsibility Act  
 Covered Material Categories (as updated September 2, 2025)

Category ID	Material Class	Material Type	Form
25_G1N	Glass	Glass	Bottles and Jars w/o plastic component
25_G1P	Glass	Glass	Bottle and Jars w/ plastic component
25_G2N	Glass	Glass	Other Forms w/o plastic component
25_G2P	Glass	Glass	Other Forms w/ plastic component
25_G3N	Glass	Glass	Small - Two or more sides measuring 2 inches or less w/o plastic component
25_G3P	Glass	Glass	Small - Two or more sides measuring 2 inches or less w/ plastic component
25_C1N	Ceramic	Ceramic	All Forms w/o plastic component
25_C1P	Ceramic	Ceramic	All Forms w/ plastic component
25_C2N	Ceramic	Ceramic	Small - Two or more sides measuring 2 inches or less w/o plastic component
25_C2P	Ceramic	Ceramic	Small - Two or more sides measuring 2 inches or less w/ plastic component
25_M1N	Metal	Aluminum	Non-aerosol Container w/o plastic component
25_M1P	Metal	Aluminum	Non-aerosol Container w/ plastic component

## Covered Materials that Must be Locally Collected for Recycling or Composting



 <b>Recyclable</b>	 <b>Compostable</b>
 <p>Rigid plastics 1, 2, &amp; 5   Unlined paper   Glass   Metal</p>	 <p>Waxed and unlined paper / fiber   Wood</p>

**NO:**



**NOTE:** The statewide list is updated annually. The list above is effective as of January 2025.



## SB 54 Local Acceptance Deadlines (proposed text of Article 11)



- (1) On the first date that CalRecycle approves the PRO plan, local jurisdictions and recycling service providers must collect all covered materials in the CMC list in their recycling and composting programs.
- (2) Covered material is considered included if the local jurisdiction or recycling service provider collects the covered material and transfers it to responsible end markets directly or to intermediate supply chain entities.
- (3) A change to the CMC list that imposes additional obligations does not affect the obligations of local jurisdictions or recycling service providers until one year after the change. A local jurisdiction or recycling service provider may submit a request to CalRecycle for a compliance extension or exemption.



## SB 54 – Recyclability Comments (proposed text of Section 18980.3.1 (b))



CalRecycle will annually review the Covered Materials Category recyclability and shall consider recyclability comments only to the extent they address the following:

- (1) The likelihood that the covered material category will satisfy the recycling requirements before the next update to the material characterization study.
- (2) The extent to which “statewide recycling” and “alternative collection” programs have increased statewide collection and sorting.
- (3) How designation of the covered material category as recyclable on the CMC list is necessary to avoid disruption of increases in collection, sorting, and development of responsible end markets.
- (4) Assertions that the inability to lawfully label a particular covered material as “recyclable” or with the chasing arrows symbol would disrupt collection, sorting, and development of end markets necessary to satisfy SB 54 recycling requirements.

## SB 54 – Current Status & Next Steps



SB 54 permanent regulations comment period – reformed regulations were published in the California Regulatory Notice Register on August 22, 2025, which started the written public comment period.

- CalRecycle will hold a hybrid public hearing on October 7, 2025, to end the comment period.

SB 54 Revised Programmatic Environmental Impact Report (PEIR) is available for review and comment until October 10, 2025.

A 45-day public comment period for California's plastic and packaging reforms began August 22, 2025, and ends October 7, 2025.

Submit Comments

Regulations Page

A 45-day comment period for the Partially Recirculated Draft Program Environmental Impact Report for the Proposed Regulations for SB 54 began August 26, 2025, and ends October 10, 2025, 5:00PM PST.

Public  
Comments

Notice of  
Availability

Revised  
Draft PEIR

Go to <https://calrecycle.ca.gov/packaging/packaging-epr/> for more information & to submit comments

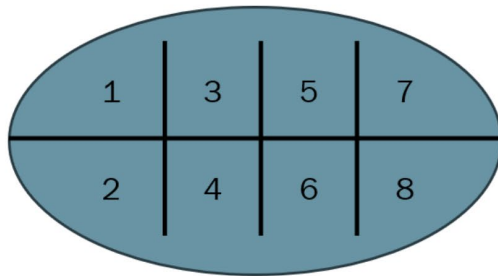
## SB 54 Goal Statewide Circular Economy





# Countywide Waste Characterization Selected Proposal

Santa Cruz County Integrated Waste Management Local Task Force  
September 4, 2025



Plan View Showing "Cells" of Pile



## Waste Characterization Selected Proposal



Santa Cruz County selected SCS Engineers proposal for  
Unincorporated County Waste Characterization Study

- City of Santa Cruz has expressed interest in coordinating a study using the same methodology and the same timeframe at its Dimeo Lane waste site to ensure its facility benefits from the proposed visual waste inspections.
- City of Watsonville and City of Capitola indicated that the study proposal, though interesting, did not fit into their budget.
- City of Scotts Valley has not yet indicated its interest in participating

**SCS ENGINEERS**

## Waste Characterization Study Tasks



### Task 1: Develop Study Methodology

- Project Kick-Off Meeting
- Develop Sampling Protocols & Sorting Plan

### Task 2: Physical Waste Sampling and Visual Characterization

- Select Samples to be Sorted
- Hand-sort samples into pre-determined material types
- Weigh by assigned material categories
- Record material categories on sampling form
- Visual characterization estimates loads by material types

### Task 3: Sampling Results Quality Assurance & Data Analysis

- Data QA/QC & deliver data analysis spreadsheet

### Task 4: Deliver Draft and Final Report to County

## Waste Characterization Study Next Steps



- Communicate decision to select SCS Engineers for one week study proposal as outlined in bid proposal.
- Contact GreenWaste Recovery regarding waste characterization study decision as required under Franchise Agreement.
- Schedule meeting between County, City of Santa Cruz, GreenWaste Recovery, and SCS Engineers to develop contract approach and timeline based on bid proposal.
- Prepare and execute waste characterization study contract(s).
- Gather information required for kick-off meeting.
- Select kick-off meeting date.



# SB 1053 Bag Ban Progress Report

Santa Cruz County Integrated Waste Management Local Task Force  
September 4, 2025

## New Carryout Bag Requirements SB 1053



State law places new restrictions on the types of bags most grocery, retail stores with a pharmacy, convenience stores, food marts, and liquor stores can distribute:

- **Beginning January 1, 2026**, stores will only be allowed to distribute recycled carryout paper bags to customers for a minimum charge of ten cents (\$0.10) per bag at:
  - Checkout counters
  - Self-checkout kiosks
  - In-store pickup
  - Curbside delivery
  - Home delivery
- **Beginning January 1, 2028**, recycled paper bags distributed at stores must contain at least 50% postconsumer recycled materials.

California Public Resources Code section 42279 et. seq.

## New Carryout Bag Requirements SB 1053



### Local Ordinances Across California

Every store throughout California must comply with the requirements of the law, regardless of where the store is located. If the store is in a city or county that has its own bag ordinance, however, the store may need to comply with the local requirements as well.

[A list of cities and counties that have adopted bag ordinances is available.](#) This page may not contain every local jurisdiction in California with an ordinance that restricts or prohibits the use of certain bags. We recommend checking with your local city or county authority to verify whether your city or county has its own bag ban ordinance that is in effect.

## New Carryout Bag Requirements SB 1053



Santa Cruz County intends to rewrite existing carryout bag ordinance to comply with revisions to state law:

- County staff will draft ordinance
- Submit to County Counsel for review and approval
- Send to Board of Supervisors for first reading
- Send to Consent calendar for review and approval
- Implement by January 1, 2026

County Staff will share its draft ordinance with city partner agencies interested in adopting a revised ordinance.

County staff willing to collaborate on drafting a countywide ordinance if city staff would like to review and provide comments on draft ordinance.